

Positive About Our Future Kent's Children and Young People's Plan 2008-2011

First Annual Review

Draft 1 For Review

June 2009

Contents

| | |
|---|---------|
| Introduction | Page 3 |
| One Year on: A Review of the Kent Children and Young People's Plan 2008-2011 | Page 4 |
| Review of the 8 priorities | |
| 1. To reduce the impact of poverty (generational and situational) on children's lives by tackling the underlying causes and mitigating the effects. | Page 7 |
| 2. To draw on and improve resilience in C&YP to help them make informed and healthy/safe choices and develop coping strategies. To include a focus on children and young people with emotional and/or mental health problems. | Page 10 |
| 3. To improve parenting by implementing Every Parent Matters and developing more effective multi-agency support and early intervention for families experiencing problems. | Page 16 |
| 4. To improve the quality and stability of housing provision for vulnerable children and young people through to early adulthood. | Page 20 |
| 5. Supporting vulnerable children to improve their life chances including improving the achievement and quality of life for young carers by implementing the Kent Young Carers' Strategy. | Page 23 |
| 6. To ensure more young people have things to do and safe places to go in their leisure time and improve outcomes for adolescents at risk to themselves and potentially others, through for example implementation of the Integrated Youth Support Services Strategy. | Page 28 |
| 7. To increase engagement and participation by young people in education, employment and society in order to prevent disaffection and improve security. | Page 32 |
| 8. Children and young people are safe and feel safe in the communities where they live, go to school, play and work – with a focus on taking action to reduce the incidence and impact of bullying in school and the community. | Page 39 |
| Enablers: activities that must be addressed effectively to secure the delivery of the 8 priorities, they include effective progress on: | Page 43 |
| <ul style="list-style-type: none">• Integrated service delivery teams• Workforce planning and development• Integrated processes and procedures• Involvement and participation of children, young people and their families | |

Introduction:

Welcome to the first annual review of Kent's Children and Young People's Plan.

Our plan sets the direction for the Kent Children's Trust for 2008- 2011 and articulates the Trust's ambition to continue to focus on improving outcomes for all children and young people. It sits at the heart of children's services in Kent and puts into words our vision for the future.

The current economic downturn will mean that more families face difficult times and the work of the Trust is more vital than ever. Together we can draw on the strengths of all partners to support and improve the lives of children and young people and their families, putting aside our organisational boundaries to put a child or young person at the heart of what we do.

The Trust has a huge potential to positively impact on children and young people's lives now and leave a lasting legacy as those children grow into adults. The Children and Young People's plan remains the key to helping bring all agencies together to focus on those things we can change for the better by working together.

Kent is home to almost 345,000 children and young people aged up to 19. The Kent Children's Trust aims to make sure that these children are safe, healthy, enjoy life, can achieve to their full potential and are prepared for adult life and work.

This review sets out a picture of how, even in these early stages we have started to focus the work of partners on those areas of need that are the most urgent to address. We have been building relationships, finding new ways of working, involving those who use our services and putting activities in place to realise our ambitions.

We continue to take every opportunity to focus on disadvantaged children and to find ways to improve their life chances.

We are only one year into the plan and we know we still have much to do. However we know that we are starting from a position of strength with good feedback from two major external inspections in 2008, the Joint Area Review and the Annual Performance Assessment which noted a *strong and consistent record of improvement and partnership working*.

We cannot change things without understanding our own strengths and weaknesses, understanding the needs of those who use our services and what it is like to grow up in Kent today. This first annual review is based on a thorough needs assessment of the issues facing children, young people and families in Kent. The purpose of the annual review is to help us to assess how well we are doing against our plan and evaluate what difference we have made to the lives of children and families and which might need extra help and support in the future.

One Year on: A Review of Kent's Children and Young People's Plan:

Taking time to review our progress is important, because it will help us assess how we are doing and allows us to refocus our activity where our approach is not having the impact we are seeking. The Kent Children and Young People's Plan is based on a thorough needs assessment and targets areas where the evidence suggests working in partnership will improve outcomes for all the children and young people of Kent. The framework for delivering this plan is the Kent Children's Trust arrangements, these arrangements are progressing well in Kent and we will continue to develop the partnership to ensure that we deliver more on our agreed priorities over the coming year.

Key Findings:

During the review and through the extensive Needs Assessment we arrived at some key findings. These will influence the work of the Trust during the second year of implementing our plan. It was clear that:

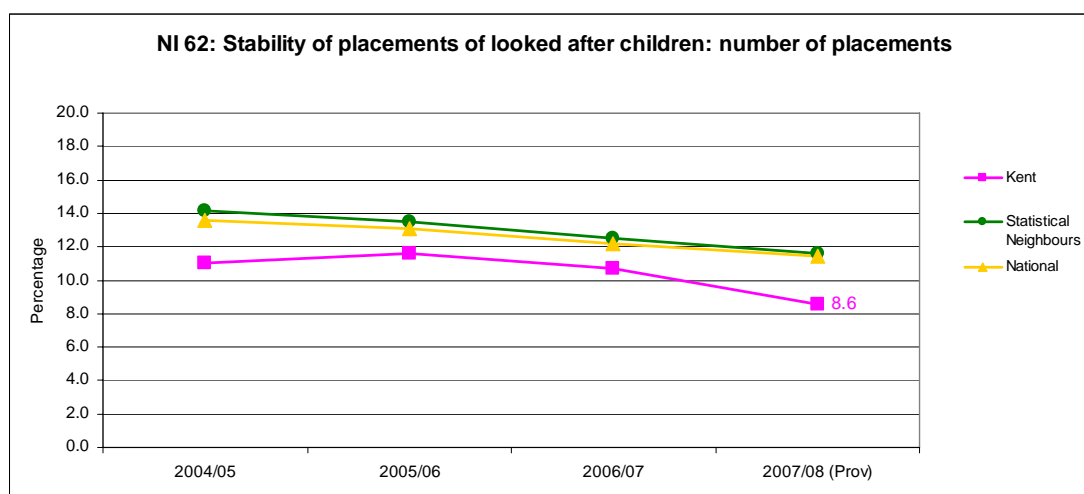
- The original priorities agreed in 2008 plan are still highly relevant and appropriate areas of focus for improving the lives of children and young people in Kent.
- Some areas of the plan need additional focus and refinement to ensure that we achieve the targets we have set ourselves.

In Summary:

What we are doing well:

The review has confirmed that Kent is performing well with evidence of:

- Good progress on Extended Services and Children's Centres developments. (Priority 1, 7 and Enablers)
- Low rates of infant mortality and babies born with a low birth weight. (Priority 3)



Source: DSCF, SSDA903 statutory returns. Shows % who have had 3 or more moves in one year.

- Looked after children benefiting from permanence in their lives with fewer moves and longer placements. (Priority 5)

- A low rate of first time offending. (Priority 6)
- Many young people making a positive contribution to others, their community or school (Priority 6)
- Excellent educational attainment at GCSE. (Priority 7)
- Low incidence of 16-18 year olds not in education, employment or training. (Priority 7)
- Strong participation in vocational education with over 5,500 14 to 16 learners currently involved in the vocational and applied learning programme. (Priority 7)
- Strong arrangements for agencies to work together in keeping children and young people safe as evidenced by external inspection findings.(Priority 8)
- Good performance by Children's Social Services on assessments, referrals & reviews. For example in 2007/8 100% of child protection cases were reviewed within timescales. (Priority 8)
- Strong commitment from all partners with a shared vision of improving outcomes. (Enablers)
- Many opportunities for young people to have their say and get involved in decisions that affect their lives. (Enablers)
- Development of ambitious and innovative Trust structures and inter agency governance arrangements that have received national recognition. (Enablers and see appendix 1)

Areas for renewed focus:

The review has indicated that renewed focus on implementing plans and activities in the following areas will be vital in securing the improvements needed to meet the needs of all children and young people in Kent:

- | |
|--|
| <ul style="list-style-type: none"> • Reducing the rate of teenage pregnancy. Latest figures show that the rate remains static with 38.0 per thousand 15-17 year olds in 2005, 37.1 in 2006, and 37.2 in 2007. (Priority 2) • Understanding why year 10s do not participate in the wide range of activities provided. 69.5% of young people in Year 10 say they engage in positive activities nationally compared to 59.0% in Kent. (Priority 2) • Understanding why children and young people in Kent report a slightly higher rate of misusing alcohol and illegal substances. 12.8% in Kent compared to 10.9% nationally. (Priority 2). • Improving early years outcomes through reducing smoking during pregnancy, increasing the rate of breast feeding and achieving a step change in the foundation stage performance. Kent has an above average rate of mothers who smoke in pregnancy and a declining rate of mothers who breastfeed. (Priority 3) • Understanding why safety is a concern for children and young people in some local areas and particularly road safety. (Priority 8) |
|--|

There are some areas of work where we cannot provide evidence that activity is making an impact yet. This may be because there is a time lag in data available to evidence change or because we are just at the beginning of implementing our plan and new activity has not had time to make an impact on outcomes. The Trust will take particular interest in these areas as data emerges and in some cases we will need to develop interim measures of

performance to evidence the impact of steps being taken to address these longer term objectives:

- Narrowing the gap between children and young people who are eligible for free school meals/ come from a low income family and their peers. There is evidence from the Kent Pupil Survey and the relevant national Indicators that children eligible for free school meals do not do as well as their peers, are more likely to be bullied and more likely to smoke.
- Improved feedback to children and young people to tell them how their views influenced service planning and provision.
- Housing: ensuring plans are in place to respond to the needs of vulnerable families and young people.

Taking forward key areas for improvement or development

Partners in the Kent Children's Trust will agree an action plan to take forward the areas for renewed focus identified in the review. The implementation of any additional actions will be monitored as part of the Children and Young People's Plan review in 2010. (See Appendix 6 for the Draft CYPP Review action plan 2009).

Other key developments planned this year

The partnership will continue to respond to new and emerging agendas that support its priorities and develop existing strategies in the light of new evidence. Some of the developing agendas that the partnership will address this year include:

- Kent's response to the Government's *The protection of children in England: action plan* - following the Laming Review of child protection measures.
- Think Family Initiative – providing targeted parenting and family support.
- The Inspiring Communities programme which aims to support communities to raise the aspirations and educational attainment of young people. Kent will bid for funding from this Government Initiative during 2009.
- Kent's poverty pilots developing local approaches to tackling the causes and effects of child poverty.
- Developing a Kent Children's Trust strategy for supporting and working with the voluntary and community sector
- Updating our strategy for prevention and early intervention.

Constraints of the first review: This review is taking place just one year into a three-year plan and only six months after the Local Children's Services Partnerships were introduced. However we are making progress in many areas. Evidence based activities are in place and we are trying new ways of working together, but in many cases it is still too early to say whether we are making an impact. To evidence changes in outcomes we would expect to see improvements in performance data, (the national indicators), and in the responses children and young people give us in the Children and Young People of Kent Survey. The next survey will take place late in 2009 and there is an inevitable lag in data from the new National Indicator data set. Similarly, longer term objectives will require more fundamental changes that may take longer to evidence through the high level indicators being used for monitoring.

Progress on our Priorities:

Priority 1:

To reduce the impact of poverty (generational and situational) on children's lives by tackling the underlying causes and mitigating the effects.

The impacts of living in poverty/with low income are evident across all the Every Child Matters Outcomes for children, young people and their families. This review has identified narrowing those gaps as a key area for focus.

Outcome 1A: Ensure Parents are enabled to work or take up learning opportunities

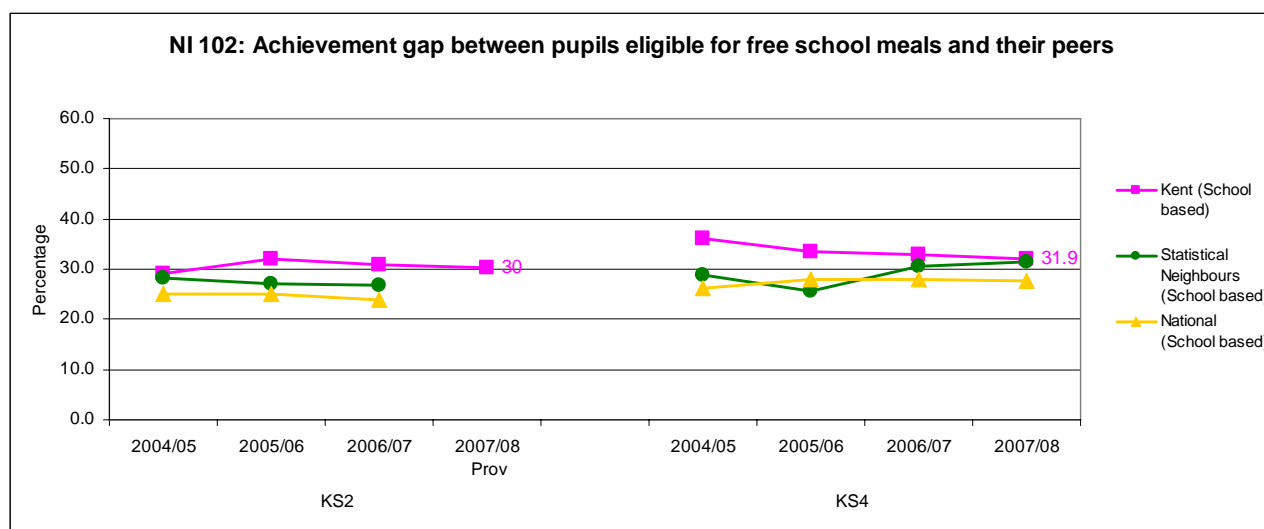
- 2,500 adult learners and their children take part in family learning courses each year in Kent. Courses are delivered in schools, Children's Centres, libraries and other community venues. As a result of engagement through family programmes up to 40-60% of Kent adults are encouraged to go on to achieve a national test in literacy or numeracy and over 40% go on to further courses of training or study.
- Kent Adult Education Service has introduced Skills for Employment courses for parents/carers and is working with primary schools across Kent where family programmes are welcomed for parents and the wider community in line with the extended schools agenda.
- Currently Jobcentre Plus services are provided in 45 Children's Centres offering advice and guidance about opportunities to work and working with Children, Families and Education to ensure that those single parents who will no longer be eligible for benefits under new national guidelines are able to access appropriate childcare so that they can return to work.
- 393 schools are providing access to the full core offer of extended services including out of school hours childcare. This exceeds our September 2008 target of 330 schools.

Outcome 1B: Children and Young People fulfil their potential regardless of financial circumstances

- Up to January 2009, more than 12,700 young people have registered for a Freedom Pass with users reporting high levels of satisfaction with the scheme. Kent Freedom Pass is fully operational in 8 out of 12 Districts offering those in Years 7 – 11 the opportunity to have unlimited transport by bus for a one off charge of £50. The pass will be available County-wide from June 2009.
- In line with this development there has been a reduction in the number of children eligible for free school meals who reported that cost and lack of transport are barriers to them taking up activities.
- 1. Fewer young people who were eligible for free school meals said that cost was a barrier to activities: (37% 2007 35% 2008) (The Children and Young People of Kent Survey)

2. Fewer young people who were eligible for free school meals said that lack of transport was a barrier to activities (30% 2007 25% 2008) (The Children and Young People of Kent Survey)

Although we have identified the achievement gap between pupils eligible for free school meals and their peers as an area for further development Kent is improving in this area and steadily closing the gap. It is worth noting that 50% of children on free school meals also have a special educational need.



Source: Department of Children, Schools and Families.

Please note that data for KS4 includes Academies. A downward trend represents improving performance.

Outcome 1C: Families struggling to manage financially have access to help and support

- Kent's campaign *Backing Kent People-real help in tough times* brings together partners from across the public and voluntary sectors to help Kent people weather the recession and make it easier for them to get the help they need. (<http://www.kent.gov.uk/Community/community-services/backing-kent-people/>)
- Kent has been successful in bidding for Government funding to develop local approaches to tackling the causes and effects of child poverty. We have £1.6m over 2 years to pilot a menu of support for families who are affected by poverty. This project will be delivered through Local Children's Services Partnerships and project managed centrally in order to add capacity to local teams.
- Kent's Credit Union is being established to reach a potential customer base of over one and a half million. This would make it the largest Credit Union nationally. The credit union is expected to be available from October 2009 and links are being made to the development of the Poverty Pilot in three partnership areas to ensure we maximise the links to the development and testing of new services. This will also allow Family Liaison Officers, Parent Support Advisors and Children's Centre staff to be trained as trusted intermediaries supporting the roll out and take up of the credit union service.
- KCC's Supporting Independence Programme (SIP) has been working on a

range of multi-agency projects to try and combat the issue of worklessness in many of our most disadvantaged communities including communities around Children's Centres in Ashford.

- A range of professionals are able to signpost families in debt to counseling and welfare services available on the Kent Resource Directory. The partnership has made sure that Children's Centres and Family Liaison Officers are particularly aware of these services. Kent has increased funding to the Citizen's Advice Bureau by £250K in order to ensure increased access to debt advice and as a part of its development of the Kent Credit Union, including fortnightly drop in sessions at a large number of schools.

Our focus for the year ahead

We want to do more to improve outcomes and life chances for children living in poverty. We will do this by developing the poverty pilots to include:

- Creating an accessible menu of services with support available across the full range of family resources- signposting, Family Liaison Officers or Parent Support Advisors support and Family Group conferencing.
- Addressing non-material hardship: family support and mediation, family learning, PSHE modules to equip with personal skills.
- Facilitate co-production: how can services work more effectively together with service users to achieve

Performance Data for Priority 1

| | | 2005/06 | 2006/07 | 2007/08 |
|------------------------|--|--------------|--------------|------------|
| Performance Indicators | | | | |
| NI 81 | Inequality gap in the achievement of a Level 3 qualification by the age of 19 | 32.7% | 31.8% | N/A |
| NI 102 | Achievement gap between pupils eligible for free school meals and their peers achieving the expected level at Key Stages 2 and 4 | 32% 33.5% | 31% 33.0% | N/A |
| NI 106 | Young people from low income backgrounds progressing to higher education | 26.5% | N/A | N/A |
| NI 118 | Take up of formal childcare by low-income working families | 13% | 14% | N/A |
| NI 116 | Proportion of children in poverty | N/A | N/A | N/A |
| NI 175 | Access to services and facilities by public transport, walking and cycling - hospitals, GP surgeries | N/A | 54% 82% | 54% 82% |

Priority 2:

To draw on and improve resilience in Children and Young People to help them make informed and healthy/safe choices and develop coping strategies. To include a focus on Children and Young People with emotional and/or mental health problems.

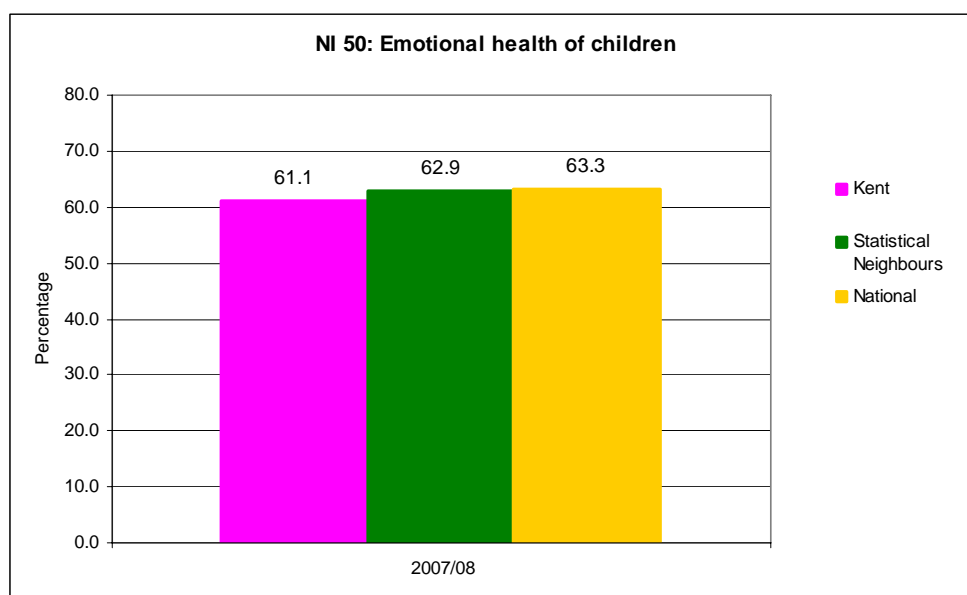
The perception of children and young people in Kent is that they are physically healthy and generally enjoy their life, 81% of young people older than 16 and 76% of 11-16s agree that they enjoy their life (Children and Young People of Kent survey 2008), they also believe that their emotional health is generally good (61%) and this perception is verified when we compare these results to the national (63%) and statistical neighbour averages (63%). (Tellus3 Survey).

Activity in Priority 2 also supports work in Priority 7 and 8, to reduce anti-social and inappropriate risk taking behaviour by helping children and young people value themselves and their community and resist peer pressure.

Outcome 2A:

Children and young people are resilient and equipped with social and emotional skills to deal with the challenges and pressures in their lives

- The Personal, Social, Health and Economic Education (PSHE) Strategy for Kent has been rolled out across the county. PSHE will become a statutory part of the curriculum, which will support the drive to improve the standard of PSHE and Sex and Relationships Education delivery both in and out of school.
- Social and Emotional Aspects of Learning audit in primary schools indicated a good take up of the programme. Recruitment of secondary schools for the pilot phase is on track to meet our target of 45% of schools.



Source: Ofsted, Tellus 3 Survey, Spring 2008

Outcome 2B:

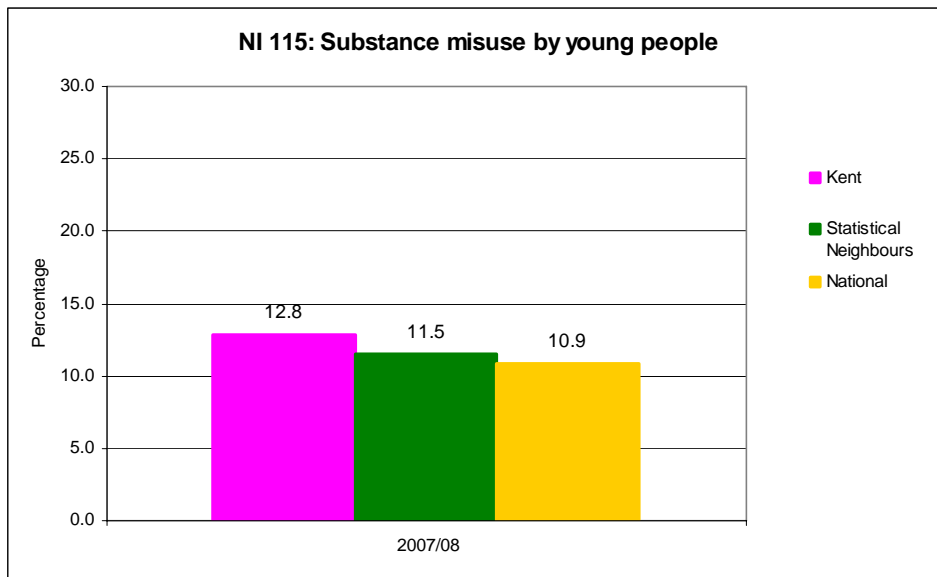
Reduction in inappropriate risk-taking behaviour, which should lead to a reduction in drug and alcohol misuse and teenage pregnancy (LAA)

Drug and alcohol misuse

We know that equipping children and young people with the emotional tools to manage life's challenges is key to making healthy life style choices and reducing inappropriate risk taking behaviour. Current information suggests that initiatives that encourage resilience and healthy life style choices, such as PSHE are having a positive impact with:

- Less young people saying they were NOT getting enough information about sexual health - 26% in 2007 compared to 24% in 2008 (The Children and Young People of Kent Survey)
- More young people saying they were getting enough information about the
 1. Effects of smoking (74% 2007 compared to 75% 2008)
 2. Effects of alcohol and drugs (73% 2007 compared to 74%2008)
- More Children and Young People indicating they never smoke (84% 2007 compared to 85% 2008 The Children and Young People of Kent Survey)
- And significantly more who report that they do not:
 1. Drink Alcohol (34% 2007 compared to 38% 2008 The Children and Young People of Kent Survey)
 2. Get drunk (58% 2007 compared to 62% 2008 The Children and Young People of Kent Survey)
- 3 School Drug Education Advisors are supporting schools to work with substance misuse issues and developing education programs and resources for schools.
- Kent Drug and Alcohol Action Team commissioned services including:
 - Targeted Early Intervention Services: 2190 young people seen between April – December 2008
 - Drug Intervention and Support Program: 172 young people seen between April – December 2008
 - Specialist Community Treatment including the Named Drugs Worker Service: 308 young people referred between April – December 2008
 - DUST: Drug and Alcohol Use Awareness raising, Referrals and Screening Tool training: 371 staff trained in 2008.

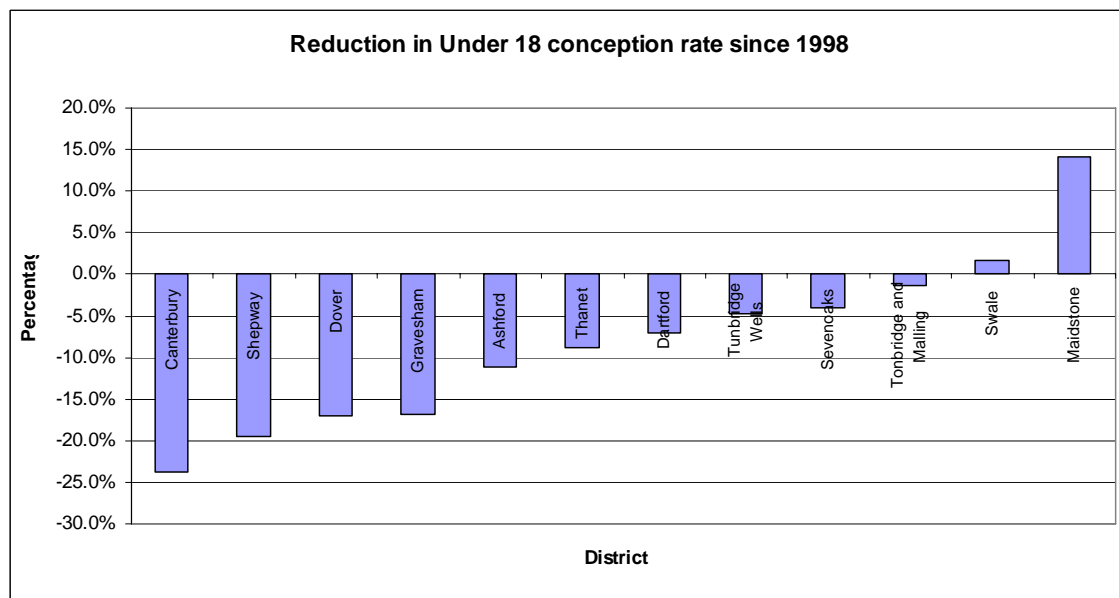
However the Tellus3 survey indicates the numbers of young people reporting misusing alcohol and other substances is higher than found nationally. 12.8% reported having been drunk, taken illegal drugs and/or used volatile substances within the last four weeks (compared to 10.9% nationally and 11.5% of statistical neighbours).



Source: Ofsted, Tellus3 Survey, Spring 2008

Teenage conceptions

The rate of reduction in teenage conceptions for 2007 remains much the same as for 2006 (38.0 per thousand 15-17 year olds in 2005, 37.1 in 2006, and 37.2 in 2007). The Teenage Pregnancy Strategy Group has an action plan in place supported by significant investment from Health relating to sexual health and contraception. 47 school/college based sexual health service centres across the county are now offering a minimum of condom supply, emergency hormonal contraception, pregnancy testing, as well as confidential advice and seven schools and four colleges will also offer a full contraceptive service, with a planned increase to 23.



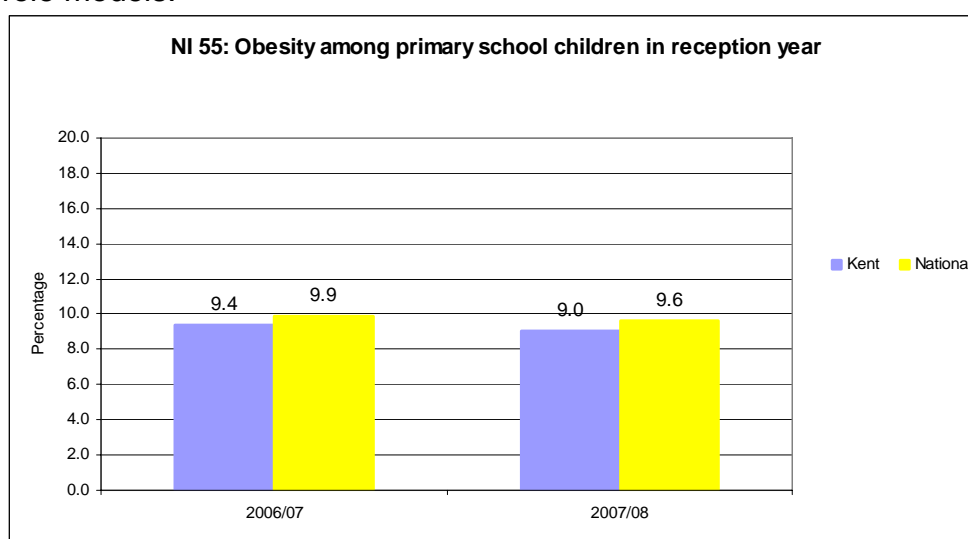
Sources: Office for National Statistics and Teenage Pregnancy Unit (2008)

The significant variation in rates of reduction between different districts is of concern with the highest reduction since 1998, occurring in Canterbury (-24%), but an increase in Maidstone (+14%).

**Outcome 2C:
Reduction in the proportion of Children and Young People who are not a healthy weight (LAA)**

100% of Kent's schools are engaged in the Healthy Schools Programme with 77% of schools having now achieved Healthy Schools status, there are already reports of evidence from schools that healthy schools activity is leading to improved pupil behaviour, including punctuality and attendance.

310 learners attended family programmes with a healthy eating focus provided by the Adult Education Service working with the Extended Schools Team, covering the 'eat well' plate, understanding food labels, making a healthy lunchbox, dealing with fussy eaters and understanding the impact of role models.



Source: NHS

Our rates of obesity in both the Reception Year and Year 6 are below national and statistical neighbours' averages, and have slightly reduced. Year R is 9.0% down from 9.4%, Year 6 is 16.7% down from 16.9%.

Kent now has 88% of pupils participating in 2 hours of high quality PE and School Sport, 8% above the 2007/08 target and 44% of pupils are now involved in inter-school sport competitions this is above the national averages for the national PE, School Sport and Club Links survey. There has also been an increase of 8% in the number of pupils in Kent involved in competitive school sport in the last year from 36% to 44% and this is above the national average. The Kent School Games involved 529 schools and it is estimated that approximately 30,000 young people were involved throughout the area heats and trials and the Finals events. Feedback on the Kent School Games from young people at the Finals was very positive.

County wide initiatives such as the walking bus scheme and working with charity Sustrans to employ a Bike It Officer to encourage cycling to school has reduced the number of pupils being regularly driven to school by more than 4,000 in the last academic year. Data from school census returns show that

in 2006/2007 at least 56,202 pupils were being driven to school reducing to 52,194 in 2007/8.

Parents receive information from the school nursing services which offers pathways to help and support should their children be deemed an unhealthy weight or at risk of becoming so.

**Outcome 2D:
Improved access to Mental Health services (LAA)**

The Child and Adolescent Mental Health Service (CAMHS) is a comprehensive multi-agency service involved in promoting emotional wellbeing and resilience. The Joint Kent CAMHS Commissioning Strategy aims to improve the quality and access to children's mental health services across the county and its work and influence was referenced in the Annual Performance Assessment where it noted 'the increased investment in CAMHS to improve access for vulnerable groups, including children with learning difficulties is a major strength.'

Furthermore following recommendations from the Joint Area Review:

- We have set up a learning disability CAMHS Expert Group and begun to implement an action plan to improve access to services with 1 of 9 planned specialist therapists now recruited.
- Only 1 under 18 has been admitted to adult psychiatric wards since September 2008. Regulations are now in place to flag any such admissions to commissioners.

We are working to ensure that children and young people receive timely support with:

- Youth Offending Service-CAMHS Workers now in post delivering and directing care to young offenders. This has meant that the waiting list target has been achieved.
- Investment has increased capacity in specialist CAMHS. Waiting list initiatives have reduced waits for non-urgent cases to under 18 weeks across Kent for specialist CAMHS. Waiting times average 12 weeks in most areas.
- 24/7 on-call services are now in place and CAMHS inpatient beds can be accessed immediately.
- Funding has been made available from Health for additional 22.5 full time equivalent CAMHS staff and for domestic violence counselling, parenting work, mental health promotion work with young carers and out of hours cover.
- Although it is difficult to evidence the impacts of this work in national indicators, a local indicator from the children and young people of Kent survey was the proportion of young people telling us they feel sad or depressed. This year more young people reported that they never or hardly ever feel sad or depressed 47% compared to 44% last year. (The Children and Young People of Kent Survey 2008).

- The “Changes Dual Diagnosis” Project in Thanet (aimed at vulnerable young people with substance misuse and mental health needs) was evaluated by the Sainsbury Centre for Mental Health in December 2008. There was sufficient evidence that the project was effective at reducing substance misuse, preventing re-offending and improving the mental health of young people, and this meant that it received additional funding for a roll-out across other parts of the county.

Our focus for the year ahead

Teenage pregnancy:

The Primary Care Trust and KCC have initiated a review of the Teenage Pregnancy Strategy and associated activity. This review will ensure that:

- local activity is focused on the key elements of the strategy,
- explain the local variation
- no further actions are required to reduce the rate of conceptions in Kent as a whole.

Substance Misuse:

We need to find out why children and young people in Kent report a slightly higher rate of misusing alcohol and illegal substances compared to the national findings, according to the Tellus3 Survey of 2008.

Performance Data for Priority 2

| | | 2005/06 | 2006/07 | 2007/08 |
|---------------------------------------|--|---------|---------|---------|
| Kent Agreement /LAA Indicators | | | | |
| NI 51 | Effectiveness of child and adolescent mental health (CAMHS) services | 9 | 12 | 12 |
| NI 55 | Obesity among primary school children in reception year | N/A | 9.4% | 9.0% |
| NI198 | Children travelling to school – mode of transport – Car use | N/A | 34% | 32.6% |

| | | 2005/06 | 2006/07 | 2007/08 | 2008/09 |
|-------------------------------------|--|---------|---------|---------|---------|
| Other Performance Indicators | | | | | |
| NI 50 | Emotional health of children | N/A | N/A | 61.1% | N/A |
| NI 112 | Under 18 conception rate | -10.3% | -11.6% | -11.6% | N/A |
| NI 115 | Substance misuse by young people | N/A | N/A | 12.8% | |
| CYP survey | percentage feeling sad or depressed most days | N/A | 11% | 10% | N/A |
| CYP survey | Percentage of young people getting drunk at least once or twice a week | N/A | 9.5% | 8.9% | N/A |

Priority 3: To improve parenting by implementing Every Parent Matters and developing more effective multi-agency support and early intervention for families experiencing problems.

Parents and carers play the most important part in their children's development and education. We recognise that stable family life and secure, confident parenting is key to giving children the resilience, optimism and self belief they need to fulfill their potential and have a positive future to look forward to.

Outcome 3A: Mothers, Fathers and Carers have help when they need it

We continue to focus on preventative strategies, making sure help is available at the earliest possible moment to respond to families in need and those who are vulnerable, including:

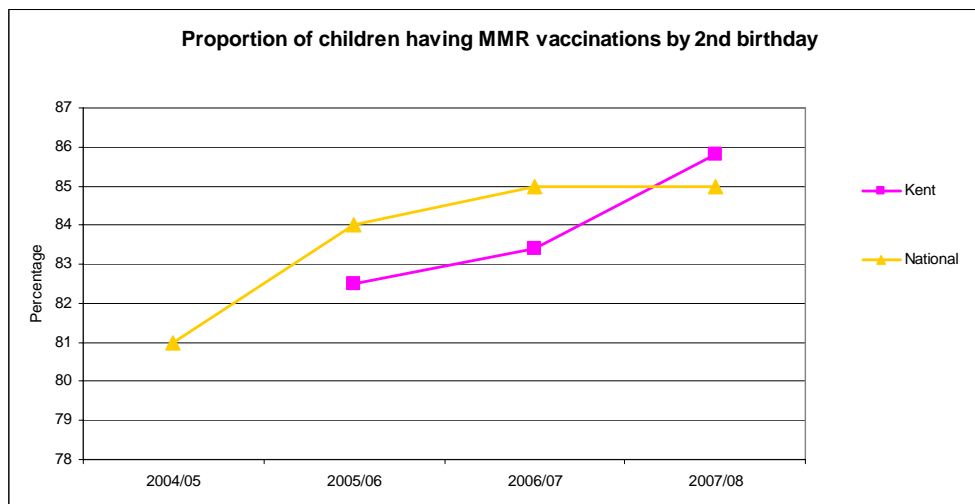
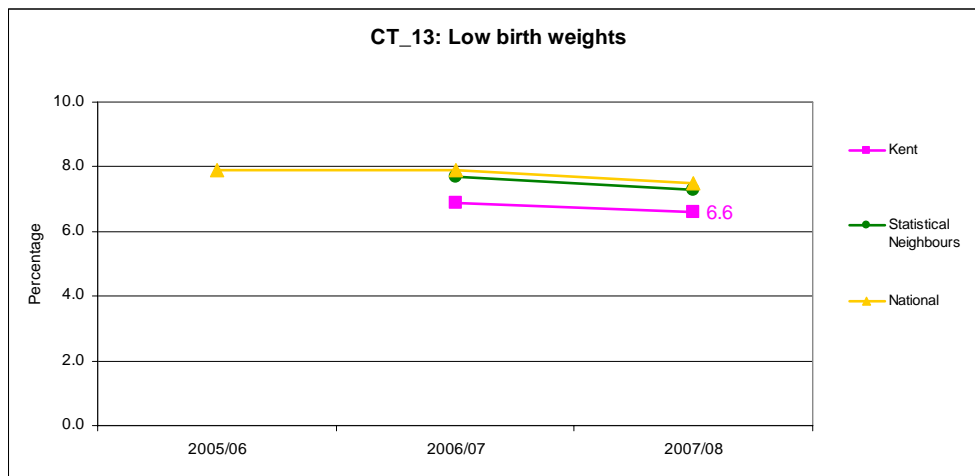
- Expanding the numbers of Family Liaison Officers and Parent Support Advisers working to support parents and enhance relationships and communication between parents and schools. This has led to an increase in the number of families accessing the most appropriate support from agencies, increased engagement of parents with schools and ensured that more parents are informed and supported particularly when their children are starting school or moving from primary to secondary education. Parents made contact with school Family Liaison Officers and staff at Children's Centres 20,967 times during 2007-08.
- This support is now available in over 200 schools and through all 23 Local Children's Services Partnerships.
- Appointment of additional Parent Support Advisers to support excluded children and their families and the families of children out of school (requested from parents through consultation on the Supporting Parents Strategy).
- Increased participation in family learning and parenting programmes. In 2007/8 216 new learners from Supporting Independence Programme wards attended parenting programmes through the Adult Education Service and 630 new learners pursued Family Literacy, Language and Numeracy Courses.
- We are exploring new ways of working with fathers and those in a fathering role including:
 - appointment of a Dad's worker in Sheppey
 - Family Liaison Officers trained in father/male carer involvement approaches
 - inclusion of fathers in Parent Forums working with the 23 Local Children's Services Partnerships

Children's Centres and Family Liaison Officers are reporting that more fathers are using their services and are increasingly involved in service development and design.

- Expansion of the family group conferencing initiative that keeps children safe within their own family setting and reduces their chance of going into care.

Outcome 3B: Mothers and Fathers have information, advice and support that will help to give children the healthiest possible start in life by increasing rates of immunisation, breastfeeding and reduction in parents' smoking

Health visitors and midwives have a crucial role in delivering child development and parental education and its effectiveness can be seen in Kent's performance with the percentage of babies born with low birth weights remaining below the national and regional averages, and continuing to fall and infant mortality also below national average and is reducing. The rate of still births also remains below the national average and, in general immunisation rates in Kent are above the national average.



Source: NHS

All parents have access to antenatal and new born screening, including the Child Health Promotion Programme which comprises a comprehensive system of care (screening/assessment/surveillance and health promotion) that is offered to every child from birth to 18 years. All mothers are given breastfeeding guidance and smoking cessation advice and access to cessation services if required.

Increasing rates of breastfeeding and encouraging mothers to stop smoking

during pregnancy are recognised as key areas for focus. Children who get a healthier, happier, nurturing start in life carry these early benefits into their future.

- Smoking during pregnancy: Kent has an above average rate of mothers smoking in pregnancy, with 17.4% doing so, compared to 16.1% nationally. A higher proportion of mothers smoking during pregnancy is found amongst residents served by Eastern Coastal Kent Primary Care Trust.
- Fewer mothers breastfeeding: One third of mothers in Kent breastfeed their infants 6-8 weeks from birth, and this proportion has declined for two years in a row. Eastern Coastal Kent Primary Care Trust rates are lower than West Kent.

Outcome 3C: There is a reduction in the repeat incidence and impact of domestic violence and substance misuse on children and families (LAA)

There has been a reduction in the repeat incidents of domestic abuse from 23.1% of incidents that are repeat incidents in 2007/8 to 22.0% in 2008/9. Domestic Abuse is a priority for all agencies and partnerships across Kent. All the Community Safety Partnerships (CDRPs) in Kent include domestic abuse targets within their Action Plans, focusing on repeat victimisation rates. Kent police is also investing in the development of the Multi-agency Risk Assessment Conference (MARAC) that will aim to reduce repeat victimisation for those individuals identified at High Risk of Harm from domestic abuse, improving those victims and their families' safety. Progress is being made at the countywide level and at the local level through Domestic Violence Forums to put in place the initiatives that will deliver a reduction in domestic violence including the domestic violence safe schools project officer and specialist domestic violence courts. (Kent Agreement 2). Kent police have in place a domestic violence repeat victim strategy which gives clear direction to staff in supporting victims including clear consideration of issues relating to children.

KCA's Substance Misuse Parent's Service is a joint initiative with Thanet and Dover social services children and families teams. The project works with families in which there are substance misuse issues which put the children at risk. This multi-agency working has led to quicker, more informed decision making about risks to children and fast track into treatment for parents. Clear successes are coming from the Project, for example in Thanet, 39 individuals had engaged in the project between April – Dec 2008. Of these 12 had stopped problematic drug use, 15 had stabilised use, and 19 were achieving progress under an agreed plan. Longer term benefits include improved developmental progress for pre-school children, and improved educational achievement outcomes through attendance, behaviour for older children.

KCA Sunlight Project is specifically designed to meet the needs of children affected by parental alcohol and drug misuse. The project works across the districts of Swale, Dover and Canterbury. The aim is to work with children 7-13 years to offer children coping skills, a chance to have fun and express themselves and gain some understanding of parents' behaviour.

A hidden harm multi-agency strategy has been developed and is being implemented.

Our focus for the year ahead

Early childhood development impacts on future outcomes and prospects for children and young people. To give our children the best start in life we need to continue to focus on activities that support

- Breast feeding
- Reduction in smoking during pregnancy
- Early years foundation stage profile results

.Performance Data for Priority 3

| | | 2006/07 | 2007/08 | 2008/09 |
|---|---|---------|---------|---------|
| Kent Agreement /LAA Performance Indicators | | | | |
| NI 32 | Repeat incidents of domestic abuse: Data available from 2009-10 (alternative measure) | N/A | 23.1 | 22.0 |
| NI 40 | Drug Users in effective treatment | N/A | 2,180 | N/A |

| | | 2005/06 | 2006/07 | 2007/08 |
|-------------------------------------|---|---------|---------|--------------------|
| Other Performance Indicators | | | | |
| NI 53 | Prevalence of breastfeeding at 6 – 8 weeks from birth | 35.5% | 34.5% | 33.6% |
| 2010 KCC | Number of parents contacts supported through children's centres and Family Liaison Officers | - | - | 20,967 |
| Vital Signs | Proportion of children who complete immunisations by recommended age | 83% | 83% | 86% |
| Health | | 2006/07 | 2007/08 | 2008/09 1/2year |
| | Smoking during pregnancy | | | |
| | Eastern & Coastal Kent | 20.1% | 19.5% | 21.1% |
| | West Kent | 14.8% | 14.9% | 14.1% |
| | Kent overall | 17.4% | 17.2% | |

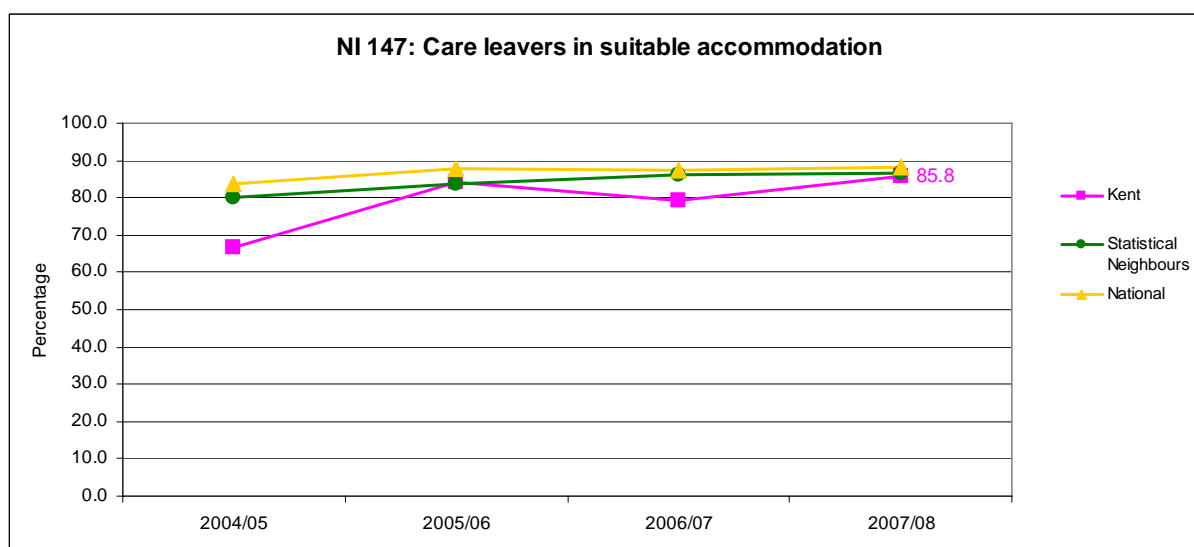
Priority 4: To improve the quality and stability of housing provision for vulnerable children & young people through to early adulthood.

Outcome 4A: Families and vulnerable young people have access to decent and suitable housing (LAA)

Ensuring decent, suitable housing is available and accessible to vulnerable groups is a long term strategy. As part of Kent Agreement 2 the Supporting People team is working in partnership with the Kent Housing Group, the Joint Policy and Planning Board, Districts and others to increase the number of vulnerable people achieving independent living.

There have been improvements with increasing numbers of families and vulnerable groups able to access suitable housing:

- Young people leaving care told us that they felt unsafe in bed and breakfast accommodation. We responded by putting specific strategies in place to increase the provision of suitable accommodation for care leavers, including use of supported accommodation and the development of protocols with District Housing Authorities. This has resulted in improvements in the provision of suitable accommodation for care leavers from 79.4% in 2007 to 85.8% in 2008. Kent's performance in this area is even better if unaccompanied asylum seekers who go missing due to their asylum status are removed from the cohort of young people this is relevant to (increasing to 94.9%).



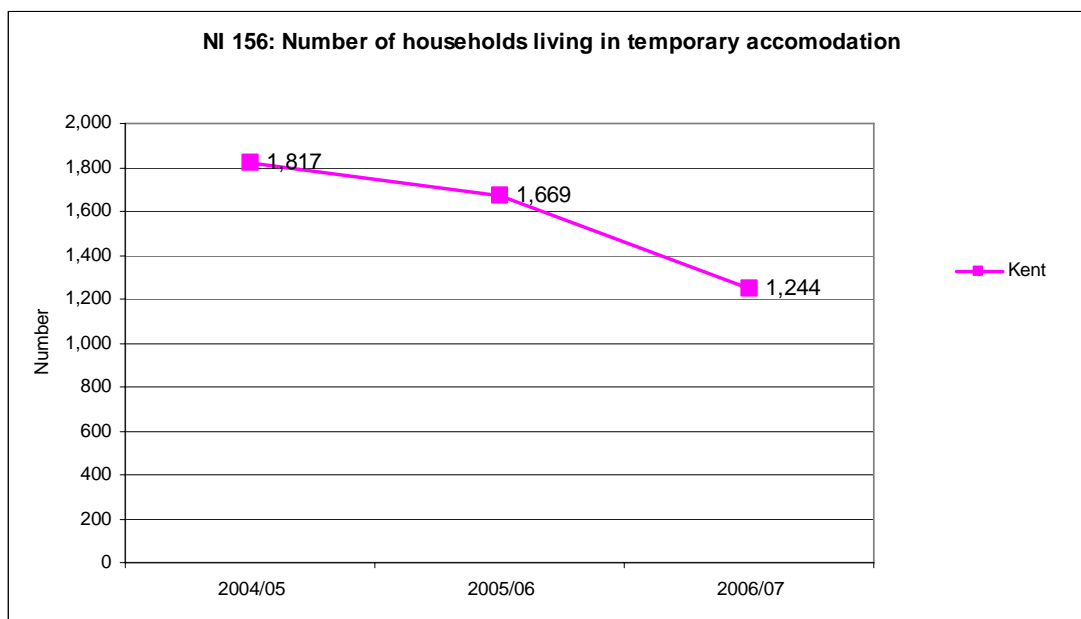
Source: SSDA903 return to DCSF

- The Supporting People Commissioning Body has commissioned additional housing-related support services for vulnerable families with children and young people. Additional time-limited floating support services (352 units) deliver support to vulnerable people in whatever accommodation they live across Kent, including support for vulnerable families with children and young people. New accommodation-based services specifically being developed for young people (and which can also be accessed by young

offenders) are 18 units across West Kent and 6 units in Dover. Another 6 units are being commissioned for teenage parents in Maidstone.

This brings support provision that can be accessed by vulnerable families, young people and teenage parents up to 1882 units of floating support and will bring accommodation-based services for these groups up to 350.

- The number of households living in temporary accommodation in Kent has decreased from 1669 in 2005/6 down to 1244 in 2006/7. This means that families and vulnerable people are spending less time in unsuitable accommodation such as bed and breakfast.



Source: P1E data - total households in temporary accommodation

Work between Children's Social Services and District Councils has started to explore ways to speed up time taken to secure housing adaptations for families with disabled children. In order to improve the referral to assessment time two additional Occupational Therapists have been recruited.

Our focus for the year ahead

We do want to do more to ensure plans are in place to respond to the needs of certain groups of vulnerable children and young people. For example data shows that access to suitable accommodation for young offenders is deteriorating. The Supporting People partnership is currently developing the new Supporting People Strategy 2010-2015. Work will include an extensive analysis of the housing-related needs of vulnerable people across Kent and consultations with a wide range of partners.

Kent is also working on an area wide housing strategy in collaboration with Medway Council and district councils in Kent; this will include a particular focus on the needs of vulnerable groups.

We will also be working more closely with the JPPB to deliver the following key actions across Kent:

- prevent young people becoming homeless and find ways to identify hidden homelessness

- Develop a multi-agency response under the prevention agenda around mediation and tenancy sustainment.

Performance Data for Priority 4

| | | 2007/08 | 2008/09 |
|----------------------------|--|--------------------------|---------|
| Kent Agreement /LAA | | | |
| NI 187 | Tackling fuel poverty – people receiving income based benefits living in homes with a low energy efficiency rating | New indicator No data | No data |

| | | 2006/07 | 2007/08 | 2008/09 |
|-------------------------------------|--|---------|---------|----------------------|
| Other Performance Indicators | | | | |
| NI 46 | Young offenders access to suitable accommodation | 87.1% | 77.0% | 89.6% (half year) |
| | | 2004/05 | 2005/06 | 2006/07 |
| NI 147 | Care leavers in suitable accommodation | 84.1% | 79.4% | 85.8% |
| NI 156 | Number of households living in temporary accommodation | 1817 | 1669 | 1244 |

Priority 5: Supporting vulnerable children to improve their life chances including improving the achievement and quality of life for young carers by implementing the Kent Young Carers Strategy.

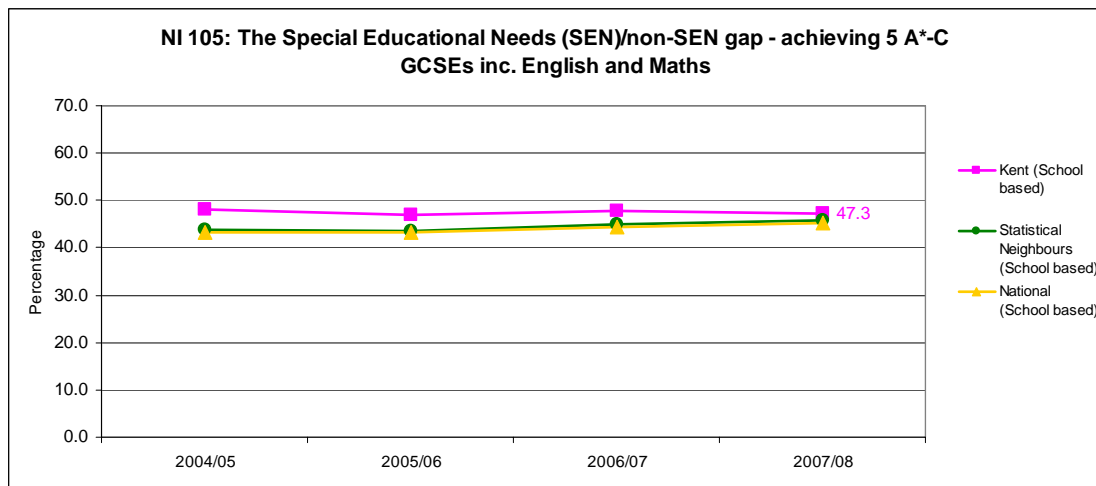
We remain committed to targeting support to give all children and young people the best chances in life regardless of circumstances, background, gender, culture, disability, religion, sexuality or ethnicity.

Outcome 5A: Young Carers are supported to live a full and active life

- Invisible People - Kent's Young Carers Strategy was formally launched in July 2008. As part of the strategy, Children's Social Services allocated £20,000 to each of the 5 Young Carers projects across the county to enable them to work directly with local schools.
- Young carers are increasingly identifying themselves as a result of targeted work in schools and more are taking part in local projects. A range of support is being developed in mainstream and specific settings to meet young carers needs. In 2007/08, through the voluntary sector we were supporting 600 young carers across Kent. At the end of 2008/09 this figure had increased to 950.
- Through the Carers Grant 160 young carers were helped to join Leisure Centres this year
- This year, to support the Local Children's Services Partnership Boards in developing links with the young carers projects and to prioritise support for young carers, each LCSP was offered £500 per 1000 of child population for match funding to develop young carers support. Ten partnerships took up this offer and a report will be made in 2009/10 on the outcome of this work.

Outcome 5B: Children and Young People who are disabled and those with learning difficulties have access to services that meet their needs, experience better educational outcomes and improved outcomes in all aspects of their lives

- Early Support Services:
 - Early Bird and Early Bird Plus training programmes are in place across 16 partnerships to enable better outcomes for young children with autism and 75 families and 25 professionals have been trained and supported since February 2008.
 - NHS Eastern and Coastal Kent have commissioned additional therapy capacity for Early Support. (see Appendix 2 priority 5 for details)
- At GCSE young people with Special Educational Needs (SEN) do better than the national average. However Kent shows a slightly bigger gap between results for pupils with special educational needs and those without. This is in part due to the outstanding performance of non-SEN pupils at GCSE compared with the rest of the Country which is making the gap harder to close. The KCT will continue to put strategies into place to help narrow the gap in attainment.



Source: County/National/Statistical Neighbours Data - Department of Children, Schools and Families

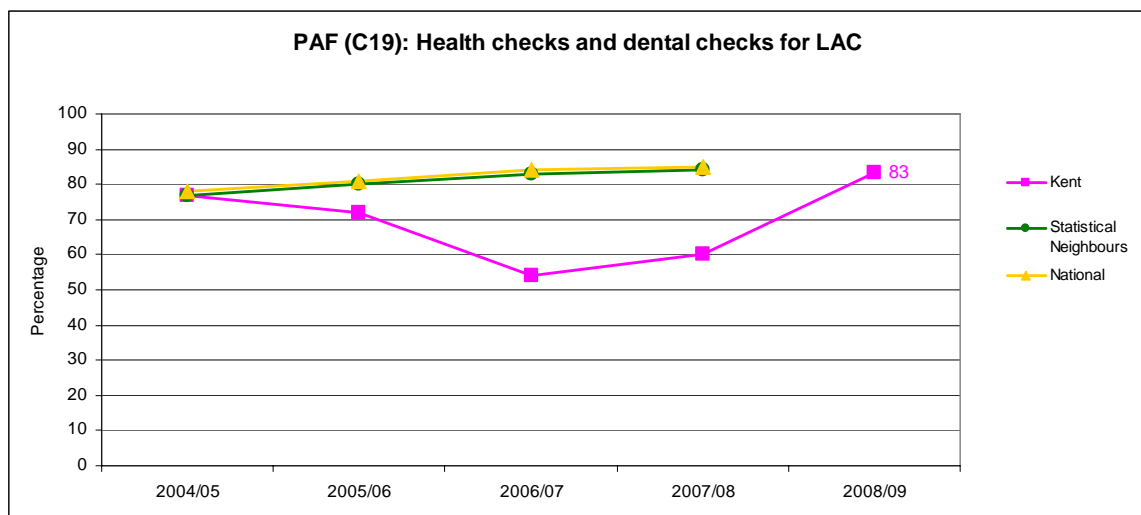
- The Kent Transition Protocols were launched in November 2008. These multi-agency protocols will ensure that young people with a disability are supported as they move from childhood into adulthood and that they and their parents and carers have access to the help, advice and information they need.

There has also been a focus this year on extending the range of services for children with disabilities: (See also appendix 2, Priority 5 for more information.)

- Kent has been chosen as one of 21 local authority areas to lead the way in transforming short break services for disabled children, as part of the national Aiming High for Disabled Children programme. The programme has attracted £15million to Kent to work with this important group of children and young people. The programme is in the process of devolving some of the budget for this work to Kent Children's Trust local partnerships in order that they can provide responsive, locally based support to disabled children and their families.
- NHS Eastern Coastal Kent Board agreed to invest £3.9 million in an innovative new model of providing joined up support for disabled children and their families through a "one stop shop" multi-agency assessment and resource centre, located in South Ashford on the Wyvern School site. The new centre will bring together a range of NHS, KCC and Third Sector services to provide integrated support to disabled children and families.
- Number of direct payments made to families has doubled in the past year, with a consequent need to expand the Direct Payment Advisory Service. There are now over 400 families using this service, enabling them to have a more personalised package of support.
- An enhanced Youth Inspection by Ofsted in 2008 praised the support provided for young people with learning difficulties and/or disabilities and vulnerable groups. It found that there was "well targeted and effective support for vulnerable groups including care leavers, young people with learning difficulties and/or disabilities and those from black and minority ethnic communities.

Outcome 5C: Looked after children are fulfilling their potential and have the help and support they need

- In Kent we have 1,491 children looked after by KCC (including 336 unaccompanied asylum seekers) and 1,327 looked after children who have been placed in Kent by another local authority (OLAC). Of those, 888 Kent looked after children and 1,081 OLAC are of school age.
- Kent was one of the first authorities to introduce a pledge for looked after children. It has been praised by ministers and set a standard for other authorities. Ensuring that every looked after child has a pathway plan in place has been a priority and is reflected in the performance indicator to regularly review pathway plans for eligible young people: 99.7% of plans were reviewed for eligible looked after children in March 08; this is an increase from 65% the previous year.
- Through targeted multi-agency support there has been a significant reduction in the number of looked after children who missed more than 25 days of schooling from 22% in 2006-7 to 15% in 2008-09 and a significant improvement in looked after children taking up their health checks from 60% to 83% in 2008.



Source: Kent County Council, OC2

- Looked after children services rated 'Good' and highly successful in the Joint Area Review with Looked After Children benefitting from permanence in their lives with fewer moves and longer placements.
- The Fostering service was inspected by Ofsted in July 2008. Kent Fostering is a Strong Service that delivers good outcomes, with elements of outstanding practice within this specialist service and for positive contribution overall.
- The development of Kent's corporate parenting framework, which includes the introduction in April 2009 of Kent's Children in Care Council will enable children and young people in care and those leaving care to have a stronger and more coherent influence on the development of services and support for children in care. Catch 22 has been commissioned to deliver a looked after children mentoring scheme for KCC looked after children.

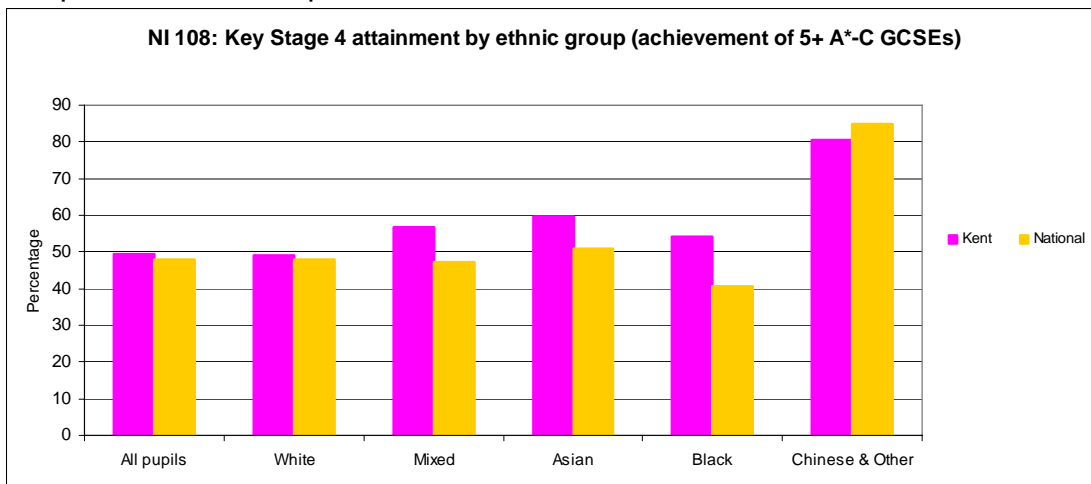
- An Integrated Support Service has been established in order to improve the life chances of looked after children and care leavers, promoting their health, educational achievement and well being and enhancing the capacity of services to meet their needs.

Our focus for the year ahead

- There is still more to do to improve educational achievements of looked after children. Improved tracking, evaluation and targeting of interventions for looked after learners within schools have led to a greater awareness of the barriers to achievement for LAC, resulting in greater ownership of outcomes for LAC across the partnership. Specific strategies are in place to raise standards of literacy including support from voluntary agencies through Volunteer Reading Help and Letterbox Club schemes and out of school hours KS2-3, KS3-4 transition, literacy and numeracy support delivered via an annual programme by Playing for Success staff at four sporting venues countywide.

Outcome 5D: Black and minority ethnic children and young people are fulfilling their potential, including those who are new to the UK

Analysis of Key Stage 2 2008 and Key Stage 4 2007 (2008 not yet available) outcomes indicate that the majority of minority ethnic groups achieve in line with, or above, the attainment for all children in Kent. There are exceptions for Gypsy, Roma and Traveler children. Even so Key Stage 2 outcomes for 2008 do show improvements for these children. Kent also performs well when compared to national performance.



Source: Department of Children, Schools and Families - 2007/08

- Kent is a Phase 1 national pilot Local Authority for the National Strategies: Gypsy, Roma and Traveler Achievement Programme. There are five pilot schools and already the programme has had an impact on attendance.
- Kent is also a pilot authority for the New Arrivals Excellence programme and is implementing aspects of the programme in Kent Children's Trust Local Children's Services Partnerships and schools with significant numbers of new arrivals.
- Identification of joiners to schools by ethnic group and language has led to better identification of new communities and targeting of provision.

- Gypsy, Roma and Traveller Achievement Programme has had an impact of attendance in the 5 pilot schools. Overall in the Key Stage 2 outcomes for 2008 have increased for Gypsy Roma and Traveller children. Although there is evidence of greater retention of children at secondary level this success is yet to be reflected in improved outcomes for Gypsy Roma and Traveller children at the end of Key Stage 4.

Numbers of Unaccompanied Asylum Seeking Children have risen to 336 Services for Unaccompanied Asylum Seeking Children established a new multi-agency Reception and Assessment Centre to meet increased demand, and this has helped to improve the quality and timeliness of service delivery to this vulnerable group of children and young people.

Performance Data for Priority 5

| | | 2005/06 | 2006/07 | 2007/08 |
|---|--|---------|---------|---------|
| Kent Agreement /LAA Performance Indicators | | | | |
| NI 99 | Children in care reaching level 4 in English at Key Stage 2 | 29.8% | 38.0% | 33.0% |
| NI 100 | Children in care reaching level 4 in Maths at Key Stage 2 | 17.5% | 31.0% | 28.0% |
| NI 101 | Children in care achieving 5 A*-C GCSEs (or equivalent) at Key Stage 4 (including English and Maths) | N/A | N/A | N/A |
| NI 87 | Secondary school persistent absence rate | 7.4 | 6.8 | 6.0 |

| | | 2005/06 | 2006/07 | 2007/08 |
|-------------------------------------|---|---------|---------|---------|
| Other Performance Indicators | | | | |
| NI 54 | Services for disabled children | N/A | N/A | N/A |
| NI 58 | Emotional and behavioural health of children in care | N/A | N/A | N/A |
| NI 104 | The Special Educational Needs (SEN)/non-SEN gap – achieving Key Stage 2 English and Maths threshold | 55.0 | 52.0 | N/A |
| NI 105 | The Special Educational Needs (SEN)/non-SEN gap – achieving 5 A*-C GCSEs inc. English and Maths | 46.9 | 47.7 | 47.3 |
| NI 107 | Key Stage 2 attainment for Black and minority ethnic groups – | | | |
| | All pupils for comparison | 66% | 66% | 69% |
| | Mixed | 70% | 72% | 73% |
| | Asian | 71% | 73% | 72% |
| | Black | 72% | 68% | 83% |
| NI 108 | Chinese and Other | 84% | 73% | 71% |
| | Key Stage 4 attainment for Black and minority ethnic groups – | | | |
| | all pupils | 46.7% | 48.2% | 49.5% |
| | Mixed | 61.9% | 58.7% | 56.7% |
| NI 148 | Asian | 59.5% | 59.0% | 59.8% |
| | Black | 58.2% | 46.3% | 54.2% |
| | Chinese and Other | 87.7% | 81.4% | 80.4% |
| NI 148 | Care leavers in employment, education or training | 57.6% | 53.4% | 54.7% |

| | | 2005/06 | 2006/07 | 2007/08 | 2008/09 |
|-----|---------------------------------------|---------|---------|---------|---------|
| PAF | Health Checks & Dental checks for LAC | 72% | 54% | 60% | 83% |

Priority 6: To ensure more young people have things to do and safe places to go in their leisure time and improve outcomes for adolescents at risk to themselves and potentially others, through for example implementation of the Integrated Youth Support Services Strategy.

Outcome 6A: Encourage all children and young people to take part in youth, cultural and community activities. (LAA)

The Integrated Youth Support Strategy (IYSS) has been commissioned by the Kent Children's Trust and developed by a working group on behalf of the Trust. It takes forward the priorities and actions within the Children and Young People's Plan designed to help young people at risk or with specific needs. It has been developed within the context of current national requirements, encompassing within it the Kent approach to developing:

- Positive Activities
- Targeted Youth Support
- Information, Advice & Guidance.

Independent Inspections confirm that there are many activities available for young people in Kent provided by a range of agencies, including the County and District Councils and voluntary sector.

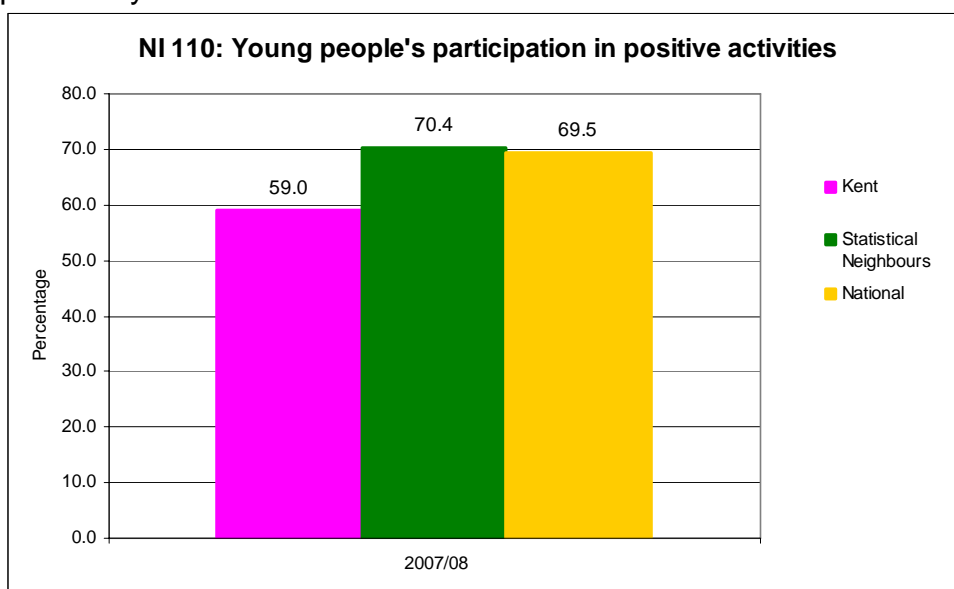
Ofsted's findings following its Enhanced Youth Inspection published in June 2008 described a high performing Youth Service in Kent, stating that, "Young people are served well by an excellent range of high quality activities to support their personal and social development". Numerical scores placed it among the top four services in the country.

We also know that a decreasing proportion of young people aged 11-19 in 2008 said that lack of activities was as a barrier to taking part in activities, 24% in 2008 compared to 28% in 2007. (The Children and Young People of Kent Survey 2008).

- There are a number of services accessible to all young people. Kent Youth Service provides more than 70 full-time youth projects across the county in a number of settings. Since 2007 new youth centres have opened in Herne Bay, Hadlow, Ashford and Hythe. The Herne Bay Youth and Children's Centre, funded primarily through Youth Capital Fund, DCSF and Second Homes money, provides the Service's first permanent youth centre in the town and will be operated in partnership with the CFE Directorate of KCC and a local voluntary youth organisation.
- District Council youth strategies have been developed with young people, providing important information about what young people want and are increasing opportunities for participation through a range of activities. There are many local examples including:
 - *In the Zone*, a programme of free activities for all ages throughout the school holidays in Sevenoaks,
 - free sports activity days at local leisure centres in Swale
 - Canterbury's *4 for Fun* where four local community centres joined together in the summer to host a three-week activity programme for young people aimed at bringing together four very different neighbourhoods

Each District monitors take up of activities, with Sevenoaks District Council, for example, reporting that there had been 450,000 attendances by children and young people at local events and activities during 2008-9.

- Kent Strategy for 2012 Games in place with a Schools and Young People Task Groups set up to focus on opportunities for young people. Kent School Games is also part of the Kent Strategy for the 2012 Games.
- The Voluntary Organisation VSU Youth In Action successfully bid for funding from V to broker opportunities for young people aged 16-19. This work has been supplemented with additional financial support from the Youth Service, and a three year Service Level Agreement is now in place to deliver volunteering opportunities for young people aged 14-16. Since April 2008, VSU is already reporting that more volunteering opportunities have been provided.
- Through the Duke of Edinburgh's Award in Kent, participants at all levels have to complete between 15 and 60 hours of volunteering. In the last three years, young people engaged in the Award in Kent have completed more than 66,000 hours of volunteering in the community. In 2008/9 3,594 young people were involved with the award – a 14% increase on the previous year.



Source: Ofsted, Tellus3 Survey, Spring 2008

The National Indicator on positive activities showed that compared to national more young people in Kent are reporting that they are not engaged in local activities. This indicator only looks at activities undertaken by Year 10 pupils, but the Tellus3 survey results show that participation rates are much higher in Years 6 and 8 (over 85%), but then drop dramatically in Year 10 (59%).

Outcome 6B: Reduce Youth Offending (LAA)

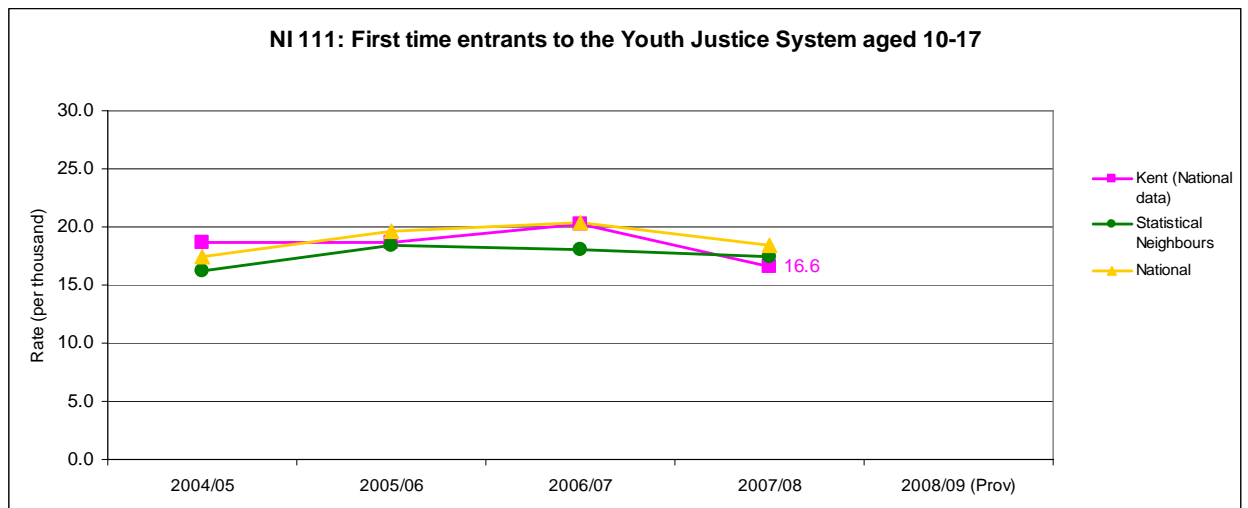
There are a number of long standing partnerships in Kent that continue to offer opportunities, interventions and activities for young people, building resilience and helping to divert them from crime and anti-social behaviour.

This multi-agency approach is having a positive impact with the first-time rate of youth offending falling and found to be lower in Kent than nationally and is at its lowest rate for at least four years. The last external inspection by Her Majesty's Inspectorate of Probation found the range of services for those at risk of offending and re-offending were a major strength.

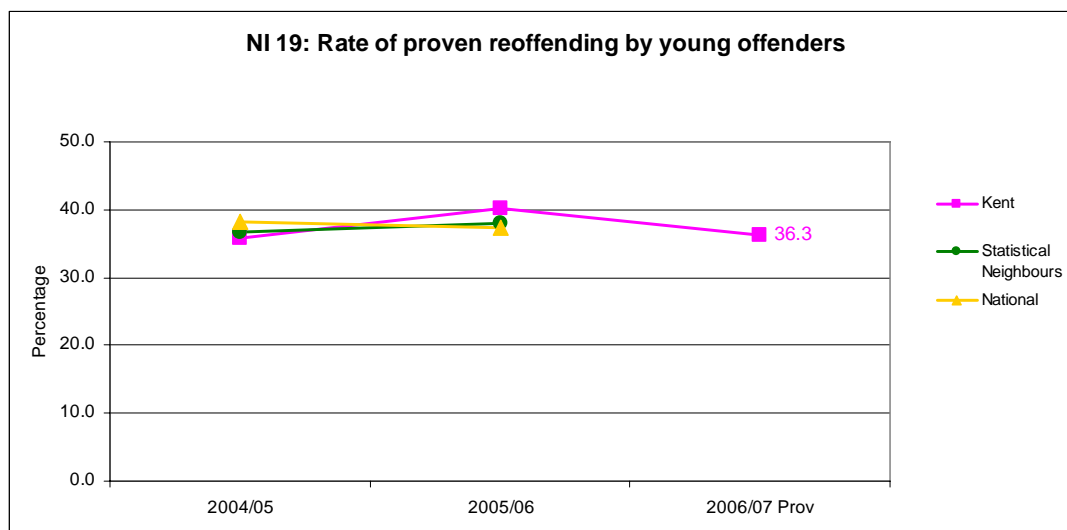
Latest data shows that re-offending has also fallen from the previous year with provisional figures suggesting that 36.3% of the 2006 group re-offended in the following 12 months, compared to 40.2% of the 2005 group.

Significant progress has been made in establishing a multi-agency Youth Inclusion Support Panel (YISP) in each of the districts in Kent, frequently building on existing preventing arrangements. The panels, which receive referrals from both community safety and children's services routes, are responsible for assessing children and young people felt to be at risk of offending, for supporting them and for signposting them to services relevant to their needs. Much of the work will focus on ensuring they are engaged in education or training, have a home which provides effective supervision and are engaged in positive leisure and sporting activities

KCC's Youth Service (utilising resource from the Area Based Grant) recruited a county co-ordinator and nine Positive Activities for Young People workers over the first quarter of 2008/9. These staff are deployed into three regional bases, and are working with a range of vulnerable young people including those Looked After, young offenders, young people excluded from school, young carers, disabled and children from black, minority and ethnic groups. This work continues until at least March 2011.



Source: Ministry of Justice's Extract from the Police National Computer



Source: 2006 - Kent County Council, Youth Offending Service: 2004-2005 - Department of Children, Schools and Families. Please note that data for 2004/5 relates to the 2004 calendar year, data for 2005/06 relates to the 2005 calendar year etc.

Our focus for the year ahead

Increasing young people's participation in positive activities is a key priority amongst partners in Kent. It has been selected as a priority outcome within the 2008-2011 Kent Agreement. In addition, KCC's elected Members have been focusing on this issue. The recent KCC Select Committee report on the provision of activities for young people produced a number of recommendations which should support greater participation, these include:

- Further support for schools to deliver extended services
- Further improvement on transport provision for young people to build on the Freedom Pass.
- Promote positive language, perceptions and expectations of young people.
- Improve methods of communication with young people.

The NI question will feature in the next CYP of Kent Survey to give more accurate feedback on take up of activities amongst young people.

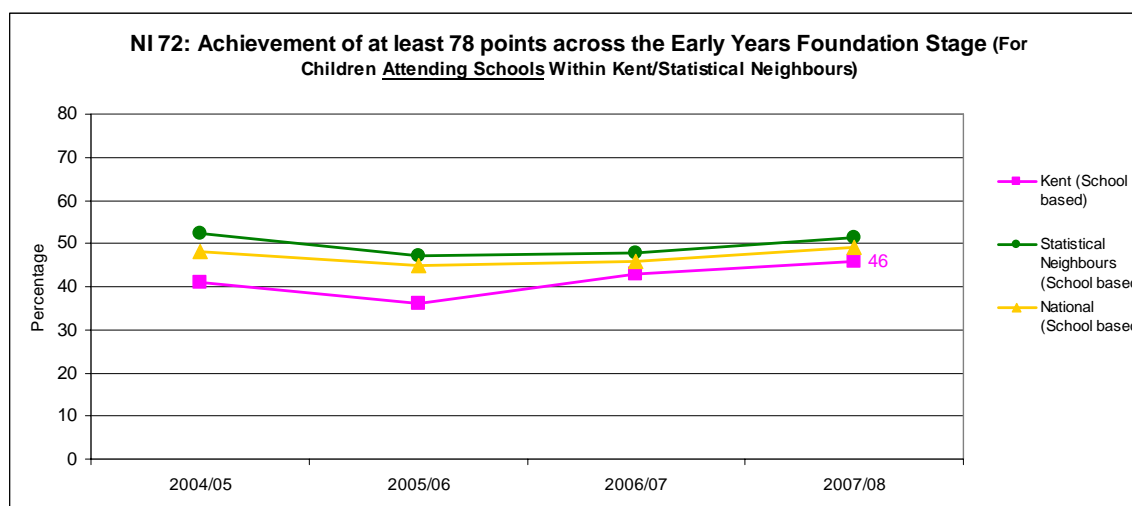
Performance Data for Priority 6

| | | 2005/06 | 2006/07 | 2007/08 |
|---|--|------------|--------------|------------|
| Kent Agreement /LAA Performance Indicators | | | | |
| NI 110 | Young people's participation in positive activities | N/A | N/A | 59.0% |
| NI 111 | First time entrants to the Youth Justice System aged 10-17 (rate per 1000) | 18.7 | 20.2 | 16.6 |
| | | 2005/06 | 2006/07 | 2007/08 |
| Other Performance Indicators | | | | |
| NI 19 | Rate of proven reoffending by young offenders | 40.2% | 36.3% (Prov) | TBC |
| CYP Kent Survey | Percentage of children and young people who feel they have their say at school/college and in their local area | N/A N/A | 66% 36% | 68% 36% |
| CYP Kent Survey | Prevalence of barriers to activities (ie cost, location etc) | | | |
| | Cost | N/A | 34% | 32% |
| | Activity is not available locally | N/A | 28% | 24% |
| | Lack of transport | N/A | 24% | 21% |

Priority 7: To increase engagement and participation by young people in education, employment and society in order to prevent disaffection and improve security

Outcome 7A: Improved outcomes for children in their early years

Kent is showing a significant upward trend in improving results across the early years foundation stage. The Making a Big Difference Project targeted schools that had the largest percentage of children whose Foundation Stage Profile scores were in the lowest 20%. 73 schools engaged in the project and there was improvement in all the aspects of personal, social and emotional (PSE) development and communication, language and literacy (CLL). Improvement in the expected levels in 2008 equates to an additional 525 children across Kent achieving a total of 78 points and at least six points in both PSE and CLL.



Source: Department of Children, Schools and Families

The greatest improvement was seen in Linking Sounds to Letters with a 5.1% increase in 2008 making a total of 10.4% improvement over two years. Boys made a 2.4% increase in writing and girls improved by 3.4%.

The development and phased implementation of the Setting Improvement Partner (SIP) Programme has accelerated improvement through a structured visit programme and has resulted in an increase of the number of early years settings that have been judged by Ofsted as good and outstanding. Programmed visits to these settings include a focus on assessing the quality of CLL and PSE and then identifying key actions for the provision including additional training. In phase one this programme supported 123 settings. An expansion of the Leading Early Years Team to include high quality practitioners working in settings has been a further drive to develop collaborative working across schools and settings as well as providing additional capacity to improve practice.

There have been a range of specific projects that have focused on schools and settings working together to improve the outcomes for vulnerable

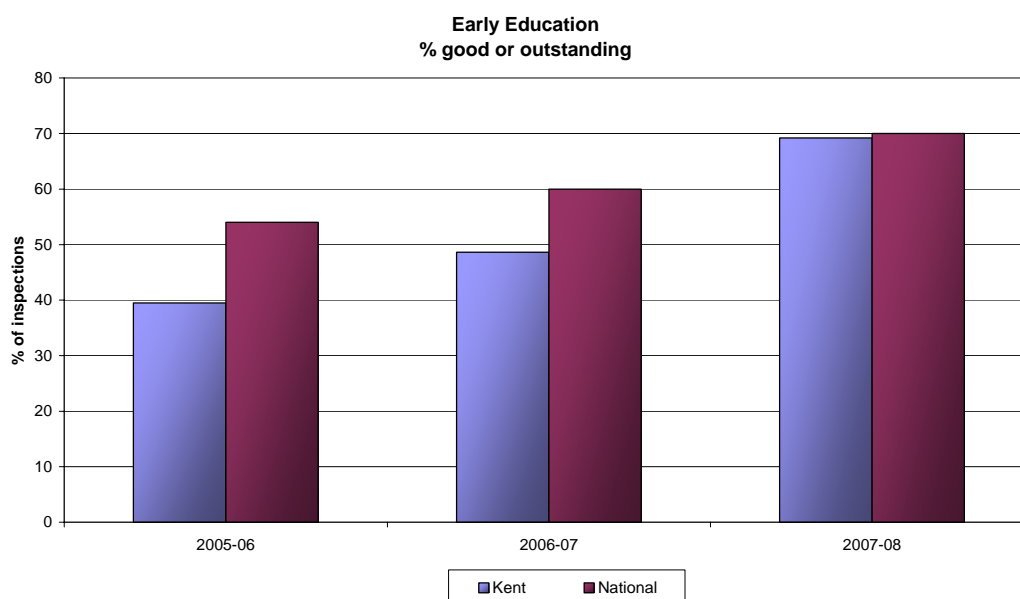
children. The DCSF 'Communication, Language and Literacy Development (CLLD) Project' has linked fifteen schools and thirty-five settings in Maidstone and Dover. Kent improvements are above the national and regional averages for this project.

Strong links have been developed between the Early Years team and the library services where joint training and working in partnership has resulted in increased engagement of the private, voluntary and independent sector as well as parents of young children through the National "Bookstart" programme. Outcomes of "Bookstart" programme for 2007/08 show young children increasingly taken advantage of library services to support learning and interaction. (all comparisons are with 2006/07 figures):

- 46,000 Kent children received Bookstart packs, a 6% increase
- 35,139 Visits to Baby Bounce and Rhyme sessions by children and adults, a 25% increase
- 619 Early Years settings and childminders now borrow books and other items for children in their care a 23% increase.
- Nearly 10% (8,250) of new members in libraries are children aged 0-4.

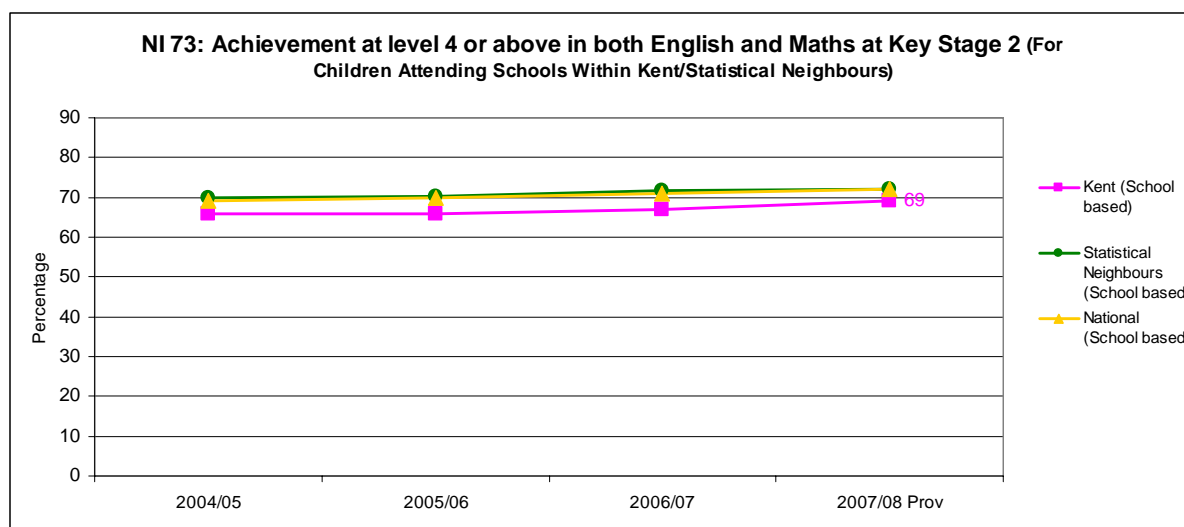
There have been a range of specific projects that have focused on schools and settings working together. These include the Communication Language and Literacy Development (CLLD) project. This project has linked fifteen schools and thirty-five settings in the Maidstone and Dover partnerships.

An expansion of the Leading Early Years Team to include high quality practitioners working in settings has been a further drive to develop collaborative working across schools and settings as well as provide additional capacity to improve practice.



Outcome 7B: Improved Attainment across all the key stages with a particular focus on Key Stage 2

In 2008 Kent achieved the best ever results at Key Stages 1 and 2 thereby closing the gap with national outcomes in English and mathematics. Performance in reading at Key Stage 1 reached a 6 year high and an increase in the number of schools achieving the Key Stage 2 national target of 65% in English and mathematics. There was a reduction in the gender gap in mathematics with 75% of both boys and girls achieving a level 4 in mathematics in 2008 compared to 73% boys and 71% of girls achieving a level 4 in 2007.



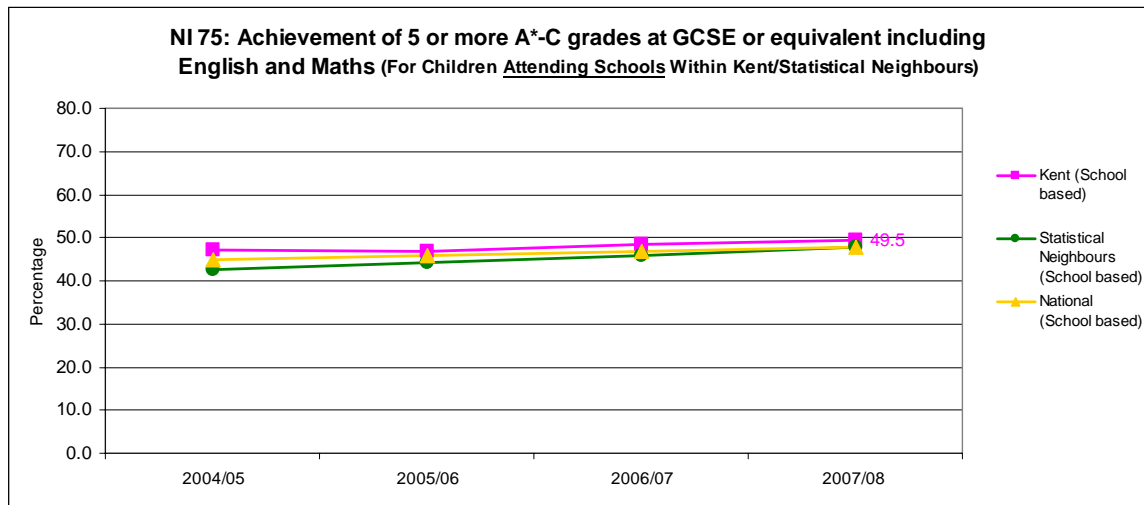
Source: Department of Children, Schools and Families

These improvements have led to a rise in the number of primary schools judged as good and outstanding by Ofsted and a reduction of the number of schools that require significant improvement.

New strategies to target groups vulnerable to underachievement include 'One to one tuition'. DCSF funding has been made available to provide individual tuition to pupils in Key Stage 2 who are not making appropriate progress from Key Stage 1. This is being targeted at schools in the most challenging circumstances. Risk assessments are undertaken for all schools to help identify appropriate programmes and support to those schools in danger of underachieving. Pupil progress is tracked and monitored across the school during the year through School Improvement Partners to ensure schools are on track to reach agreed targets and to track progress of individual pupils and particular groups.

We have taken opportunities to promote reading and literacy through the 2008 National Year of Reading. In Libraries children's book issues have continued to increase. From April to December 2008 issues rose by 3.84% compared to 2007 and over 14,000 Kent children took part in Team Read, the national Reading Challenge which helps to sustain children's literacy skills through the summer holidays. The Department for Children, Schools and Families (DCSF)

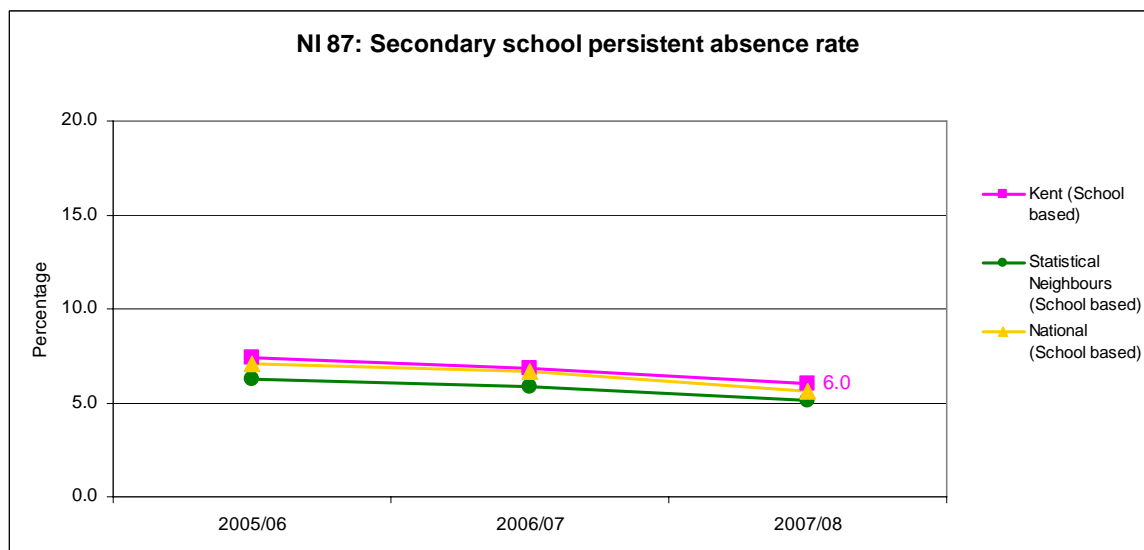
Boys into Books scheme helped us to reach 7,000 children in Primary Schools.



Source: Department of Children, Schools and Families

In 2008 Kent secondary schools and academies achieved excellent GCSE results: 49.5% of students achieved 5 or more A*-C grades at GCSE or equivalent including English and mathematics. Kent is performing above the national average (47.9%) and above similar authorities (47.8%). All Kent schools achieved the 2008 DCSF target of 30% or more students achieving 5 A*-C or equivalent. Nine Kent schools identified within the National Challenge Programme in June 2008, achieved above 30% 5 A*-C including English and mathematics. Many of the 33 schools currently supported in this programme have already made significant progress toward the 2009 targets through early entry of students in either English or mathematics.

More students achieved passes at A level or equivalent with 92% receiving 2 or more A -E grades, a 1% increase on last year.



Source: Department of Children, Schools and Families (excludes academies)

There have been year on year improvements in secondary attendance with schools using a range of methods to improve on absence rates including issuing penalty notices, increased training for Education Welfare Officers and family group conferences focusing on attendance.

**Outcome 7C:
Improved participation, achievement and progression in and through
the 11-19 education and training offer**

We continue to see expanding pathways for progression for learners aged 14-19 with learners taking up opportunities to participate and achieve in education in different ways. 25 vocational skills centre have been established across the county to provide state of the art specialist facilities to expand the curriculum offer.

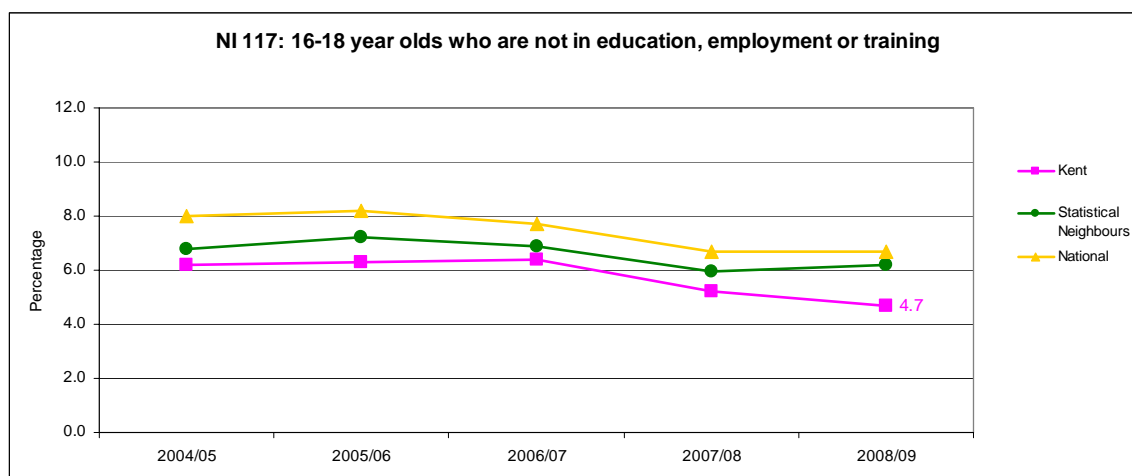
There are over 5,500 14 to 16 learners currently involved in the vocational and applied learning programme— exceeding Kent's 2010 target with feedback showing that 92% of learners, 75% of parents, 91% of teaching staff and 78% of Connexions advisors believe that vocational training is having a positive impact on the prospects and lives of young people. An independent evaluation of the vocational programme undertaken by Glasgow University will be completed in July. The initial findings from this report highlight the very positive impact the vocational programme has on learners. 80% of secondary young people and 76% of post-16 young people feel that they are either doing very well or quite well at school or college. (The Children and Young People of Kent Survey 2008).

The introduction of the diplomas with over 1400 learners expected to take up these new qualifications in September, the continued expansion of apprenticeship opportunities and the key stage engagement programme continues to broaden the programme offer across the county to meet all learners' needs.

There has been a year on year reduction in the proportion of 16-18 year olds who are not in education, employment or training (NEET) from 6.2% in 2004 to 5.2% in 2007. This improvement rate is above the national average. Increasing numbers of young people are choosing to stay on at school. (53.4% in 2000 rising to 59.6% in 2007). Nearly two thirds (65%) of post-16 young people in 2008 would like to go to university in the future, compared to 59% in 2007.

We are working closely with the Learning and Skills Council and Connexions to find ways to reduce the number even further. The Kent NEETs Prevention and Reduction Strategy will ensure that the needs of vulnerable learners are identified early and that prevention strategies are fully integrated into the work and planning of the 14-19 Partnership and local 14-19 Planning Forums. A multi-agency group has been established to steer the implementation of the strategy and to monitor its outcomes.

Provisional figures indicate that the Youth Offending Service Partnership achieved the 92% target for engagement in education with those known to Youth Offending Service who are of statutory school age.



Source: CCIS

For those pupils not in mainstream education in addition to existing Behaviour Pupil Referral Units, all alternative curriculum provision at Key Stage 4 is now taking place within newly registered Alternative Curriculum Pupil Referral Units. These were registered on 1st January 2008 and are based on an innovative model and have been developed in liaison with the Department for Children, Schools and Families. This activity was partly in response to a recommendation in the Joint Area Review action plan to improve accommodation and resources available in alternative education centres. The majority of Behaviour Pupil Referral Units achieve above average assessments through Ofsted.

Outcome 7D: Young People are equipped with the personal, employability and learning skills and attributes for success in higher levels of learning, training and employment. (LAA)

Significant development work is under way to implement across the county a robust careers education, information and guidance system for all learners. This includes an Information platform with high quality materials to support learner choices in terms of future careers and training and the development of curriculum materials and resources to support schools and colleges to develop effective careers education programmes.

Kent has also developed a 14 to 19 Area wide prospectus which is used nationally as an example of good practice. The area prospectus is a directory of all post 16 learning opportunities and learners can apply on line for a course, this is through a common application process. In 2008/9 60% of the Year 11 cohort in Kent had access to the common application process. This year 90% will have access to this process.

The Connexions service delivers universal Information; Advice & Guidance services for 13-19 year olds and up to 25 years old for young people with a disability and also provides targeted support for vulnerable young people.

During the course of the 2007/08 academic year, Kent Works facilitated work-related learning activity for over 7,000 young people across the county. This type of activity included interview days, career awareness activity, and preparation for work experience and enterprise.

Masterclasses for 470 learners have been held throughout the county in different specialist subjects. These include a weekend with the Royal Ballet, cooking with staff from Fifteen Events, vehicle maintenance and go-karting and film creation. A further 1,000 young people have attended employer led Masterclasses giving learners an insight into the world of work and employment.

Performance Data for Priority 7

| | | 2005/06 | 2006/07 | 2007/08 |
|---|--|--------------------|--------------------|------------------|
| Kent Agreement /LAA Performance Indicators | | | | |
| NI 117 | 16-18 year olds who are not in education, employment | 6.3% | 6.4% | 5.2% |
| NI 78 | Achievement of 5 or more A*-C grades at GCSE or equivalent including English and Maths (floor). (local target) | 44 schools (43.1%) | 33 schools (34.4%) | 29 schools (29%) |

| | | 2005/06 | 2006/07 | 2007/08 |
|-------------------------------------|---|---------|---------|---------|
| Other Performance Indicators | | | | |
| NI 45 | Young offenders engagement in suitable education, employment or training | 83.0% | 73.7% | 74.7% |
| NI 72 | Achievement of at least 78 points across the Early Years Foundation Stage with at least 6 in each of the scales in Personal Social and Emotional Development and Communication, Language and Literacy | 36% | 43% | 46% |
| NI 73 | Achievement at level 4 or above in both English and Maths at Key Stage 2 (Threshold) | 66% | 67% | 69% |
| NI 75 | Achievement of 5 or more A*-C grades at GCSE or equivalent including English and Maths (Threshold) | 46.8% | 48.5% | 49.5% |
| NI 79 | Achievement of a Level 2 qualification by age 19 | 68.0% | 71.2% | TBC |
| NI 80 | Achievement of a Level 3 qualification by age 19 | 45.4% | 47.2% | TBC |
| NI 87 | Secondary school persistent absence rate | 7.4% | 6.8% | 6.0% |
| NI 92 | Narrowing the gap between the lowest achieving 20% in the Early Years Foundation Stage Profile and the rest | 34.4 | 33.0 | 32.0 |
| NI 174 | Skills gap in the current workforce reported by employers (Bi-annual) | 17.1 | N/A | 14.6 |

Priority 8: Children and young people are safe and feel safe in the communities where they live, go to school, play and work – with a focus on taking action to reduce the incidence and impact of bullying in school and the community.

Outcome 8A: The incidence and impact of bullying has been reduced

8,246 children and young people took part with 239 schools participating in the Kent Safe Schools' on-line anti-bullying survey with results showing a

- 17% reduction in number of children and young people reporting they are currently being bullied (2006 to 2008).
- 9% increase in the number of children and young people who think their school is good at dealing with bullying.

The Children and Young People of Kent Survey shows that the majority of young people feel safe most of the time:

- in their school or college (70% of 11 to 19 year olds)
- in the area where they live (68 % of 11 to 19 year olds) getting to and from school/college (67% of 11-19 year olds).

Restorative Approaches (RA) are also being piloted as a tool for repairing harm in school and other educational settings. This action is still in the early stages of development so it is too early to report on impact but examples of activity have included:

- The Launch Pad, a primary phase project aimed at pupils who have received fixed term exclusions using Restorative Approaches to successfully reintegrate pupils back into main stream school life.
- Awareness-raising with schools about the use of Restorative Approaches' including a Managing Incidents Conference and headteachers briefings.
- Development and production of RA booklet 'Developing a restorative culture in schools'.

We are supporting work to provide safe and inclusive environments with the implementation of KCC's Anti-bullying Strategy to support schools and settings.

Outcome 8B: Reduction in perception of crime and Anti-Social Behaviour where the offender or victim is aged 17 years or under (LAA)

There is great activity in place by partners working towards tackling this issue. They include Kent Community Alcohol Partnership, Drug Intervention Support Programme, Alcohol Support Programme and Charlton Athletic Social Inclusion Programme. Already there has been a decrease in the rate of young people who are the victims of crime from 27.9 (rate per 1,000) in 2005/6 to 23.1 in 2007/08. This work will also support reduction in first time offending rates (see priority 6).

The Kent Crime and Victimization Survey operated quarterly by Kent Police, provides details about peoples' experience and perceptions of crime and anti-

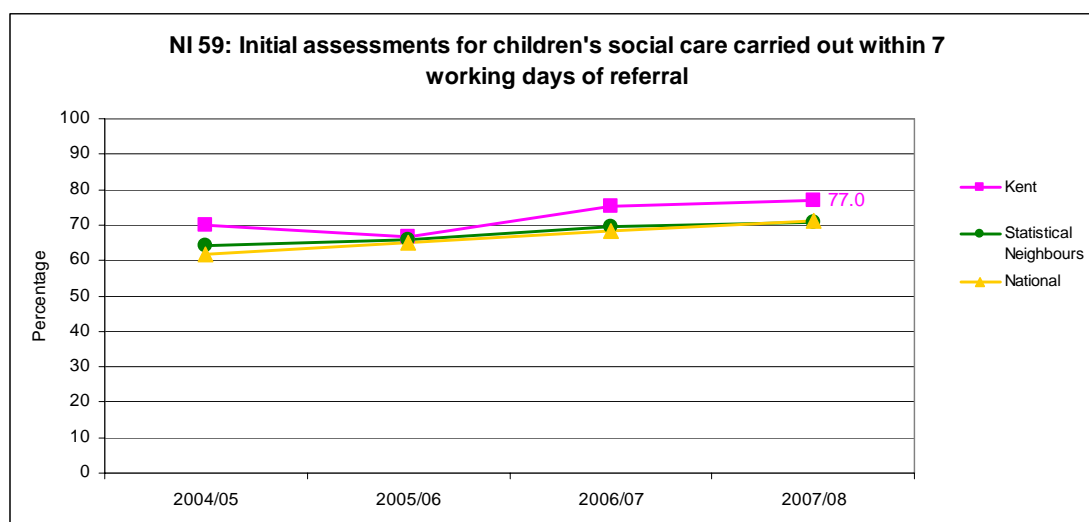
social behaviour. The survey at year ending 31st March 2009 (based on a rolling year) indicates that the anti-social behaviour of greatest concern remains 'Teenagers hanging around' however this has decreased from 37% in 2007/08 to 21% currently.

The establishment of Neighbourhood Policing Teams has recently seen an increase in resources through Neighbourhood Task Teams who are able to bring additional resources to bear in specific areas. In addition, the Chief Constable has launched the anti-social behaviour initiative to tackle anti-social behaviour and improve local confidence. (Kent Agreement 2).

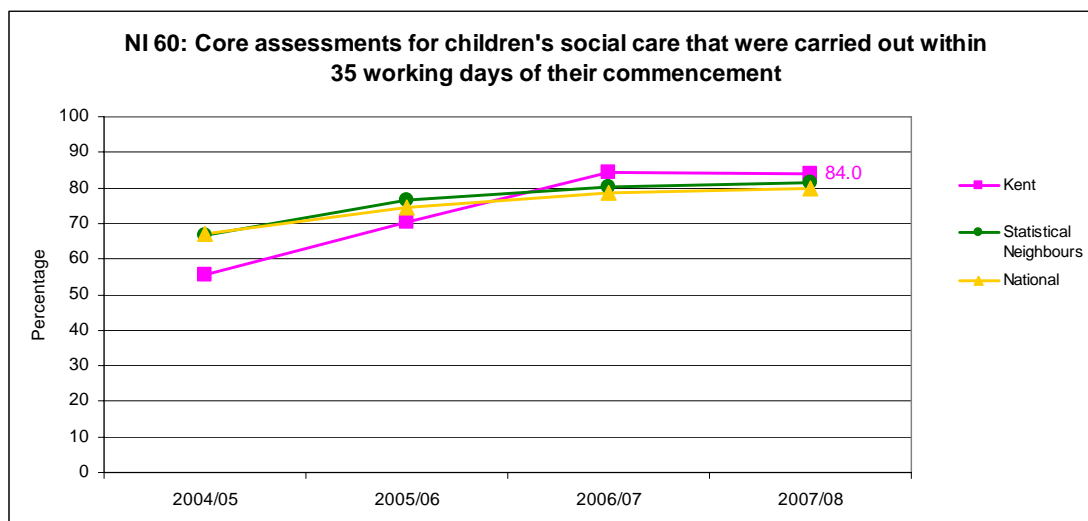
Outcome 8C: Ensure vulnerable children are safeguarded

External inspections confirmed that:

- Arrangements for agencies to work together to keep children and young people safe are good overall, in some areas excellent and consistent with Government requirements. (Ofsted, Kent Joint Area Review 2008.)
- The systems and actions to safeguard and protect children and young people in Kent are effective. Social care practice observed during the review was at least good, and in some instances excellent. (Ofsted, Kent Joint Area Review 2008.)
- Timeliness of initial assessments and core assessments by Kent's Children's Social Services are above similar authorities and noted as a major strength in the Area Performance Assessment report. In 2007/8 100% of child protection cases were reviewed within timescales.
- 69% of secondary young people feel that they receive information on internet safety in 2008 compared to 61% in 2007. (The Children and Young People of Kent Survey).
- As a result of two serious case reviews in Kent there is now a mandatory referral for a home fire safety visit for all children subject to a child protection plan for neglect. From April 2008 to January 2009 2,375 home safety visits were conducted in homes where a child under 5 lived.



Source: DSCF, CPR3 statutory returns



Source: DSCF, CPR3 statutory returns

We are increasingly exploring ways to ensure the needs of children and young people are taken into account if their parents or carers are assessed as needing support:

- A Children's Social Services and Mental Health Joint Working Protocol was developed during 2008 to improve working together arrangements in cases where a vulnerable adult has responsibility for children.
- Joint Carers Protocol between Children, Families and Education and Kent Adult Social Services has been developed to underpin the Young Carers Strategy clarifying the role and responsibilities of Adult Services staff to consider the needs of children when they are assessing the needs of adult clients and represents an agreement that children will be referred on for support from Children Social Services or Local Children Services Partnerships.

Our focus for the year ahead

Safe environments in local areas and road safety are a concern for some young people, especially those with a special educational need, those from low income families and girls. These groups were more likely to report not feeling safe where they live. Play Pathfinder & Playbuilder capital funding has been made available from Government to ensure we can provide more high-quality and safe places to play.

61 children and young people were killed in road accidents in Kent in 2007. Cyclists and young people who walk report feeling less safe than those who travel by car when travelling to school. Partners will review all actions being taken to provide safe environments and roads in Kent and identify additional actions where required.

Performance Data for Priority 8

| | | 2006/07 | 2007/08 | 2008/09 |
|---|---|---------|---------|---------|
| Kent Agreement /LAA Performance Indicators | | | | |
| NI 21 | Dealing with local concerns about anti-social behaviour and crime by the local council and police | N./A | 40 | N/A |

| | | 2004/05 | 2005/06 | 2006/07 | 2007/08 |
|-------------------------------------|--|---------|---------|---------|---------|
| Other Performance Indicators | | | | | |
| NI 48 | Children killed or seriously injured in road traffic accidents | 19.0% | 0.0% | 9.5% | N/A |
| NI 69 | Children who have experienced bullying | | N/A | N/A | 46.7% |
| NI 70 | Hospital admissions caused by unintentional and deliberate injuries to CYP (rate per 1000) | | 122.6 | 125.5 | 125.2 |
| CYP Kent Survey | Percentage of children and young people who say they feel safe most days | | | | |
| | In the area they live | | N/A | 67% | 68% |
| | To and from school | | N/A | 66% | 67% |
| KCT | Rates of CYP who are victims of crime | | 27.9 | 27.0 | 23.1 |

| |
|--|
| Enabling measures to support delivery of the 8 Kent Children's Trust Priorities |
|--|

What we are doing: activity that is supporting delivery of our priorities:

**Enabler A –Integrated service delivery teams that are easily accessible:
Local delivery of quality services**

- Ofsted reported that Kent has a 'Strong commitment from all key providers to the agreed ambitions and to new ways of working to deliver them'. (Ofsted, Kent Joint Area Review 2008)
- There are now 72 Children's Centres designated across Kent and Phase 3 is about to begin resulting in a further 30 centres which means we are on track to meet the 2010 target of 102 Children's Centres.
- Tonbridge Wells and Sevenoaks report that breast feeding clinics, child health clinics and postnatal groups now take place in Children's Centres as opposed to community health clinics and other health premises. This provides one stop shops for parents, moves away from a medical model and aids multi-agency working/virtual co location.
- A number of funding streams and associated activities have been devolved to the local children's services partnership teams to enable more effective early intervention and prevention work at a local level across the Kent Children's Trust. For example children out of school funding has been devolved to Local Children's Services Partnerships and has enabled schools and partnerships to be more creative in how they effectively meet the needs of pupils with more challenging behaviour that could result in exclusion.
- The Trusts' virtual commissioning group has developed a simple model of commissioning and detailed guidance for each stage of the commissioning process to be used by strategic and local staff working as part of the KCT.

**Enabler B – Workforce planning and development:
A quality workforce in place that ensures there is a range of skills to meet the varied and different needs of children and young people**

- A new Integrated Workforce Strategy Sub-Group of the Kent Children's Trust Board was established and they have drafted a revised workforce strategy for consultation with partners across the Trust to be circulated in July 2009.
- Kent is using the Children's Workforce Development Council (CWDC) Rainbow model in local partnerships to support the development of local workforce strategies to complement and support the Kent wide strategy.
- Strong partnerships are developing between Children's Centres and schools with health, speech and language therapists, libraries and educational psychology service on developing joint training and working collaboratively within projects.
- Kent has been selected as one of six authorities to pilot social work practices. Kent is to focus its social work practice on the provision of its leaving care services. The opportunity will help to support Kent move its

leaving care service in a direction which will meet the aspirations of Care Matters, and which is more social work and young people led.

- The Youth Offending Service-CAMHS Expert Group has overseen the development of joint training for Youth Offending Service workers in mental health, and for mental health workers in youth justice issues.
- Induction training available to children's centre, staff particularly managers and community involvement workers, delivered by Jobcentre Plus management.
- Leadership Programme for Early Years settings and Children's Centres is accredited with Canterbury Christchurch University.
- The Local Authority has utilised Government Funding Transformation Fund which has now been re designated Graduate Leader Fund to provide bursaries and opportunities for staff in early years settings to increase their level of qualifications in line with the Government's targets.
- Improved training of Family Liaison Officers and Parent Support Advisers and broadening access to this training for other practitioners working with families.
- Kent Adoption Service was also inspected in 2008 and was judged as a strong service with a highly skilled and competent workforce who achieve excellent outcomes in respect of service delivery to adopters, birth parents, carers, children and their wider families.
- Identification of vulnerable children and those in need is a key part of a number of professional training courses in Kent. We are aiming to ensure that where the children and families workforce have not gained this knowledge from their professional training they get a good insight from other learning and development opportunities. Some of the opportunities provided to date include: Solihull training to all secondary schools, Leuven for all early years providers and the Growing, Learning and Development module.
- Giving the workforce an understanding of issues faced by families and knowledge of where to signpost to is being led by the parenting commissioner and further work on this will be rolled out over the next 2 years. The development of the Family and Child Information service will enhance the KCT's ability to effectively signpost for appropriate advice and support.

Enabler C – Integrated processes

Common processes for early assessment (including multi-agency assessment), allocation/referral and response from the most appropriate services are in place and working effectively

- Common Assessment Framework and Lead professional training is ongoing. 2853 multi-agency practitioners and managers had attended training by end of January 2009. 97% of practitioners/managers reported being satisfied or very satisfied with the training.
- 240 Common Assessment Framework assessments completed since 2007, involving 221 children and young people. The experience of service users and practitioners has been evaluated to capture timely feedback about the process. Common Assessment Framework roll out is due to be completed by July 2009.

- Over 10,000 potential ContactPoint users and 24 data systems that will feed information into ContactPoint have been identified in Kent. Multi-agency procedures have been agreed for shielding records where it is necessary for children in specific circumstances who may be put at risk if their whereabouts was available through ContactPoint (e.g. children being adopted). ContactPoint will go live in Kent later this year and, like Common Assessment Framework and Lead professional functions, will be supported by an extensive programme of user training.

Enabler D – Participation and involvement of children, young people and parents/carers in all key decisions

We continue to find ways to involve children and young people and their parents in shaping services and policy and there is extensive activity across the partnership. However the Needs Assessment uncovered conflicting evidence that indicates that the views of children and young people are being sought, but their perception is that their views are not being listened to. This warrants further investigation with young people.

- The Kent Children's Trust Framework for Participation is in place. An action plan has been produced following an inter-agency workshop with representatives from children's services. The action plan is to progress participation through, for example, sharing good practice, training and development, and promoting innovative and inclusive participation
- In 2008 over 45,000 children and young people completed the Children and Young people of Kent Survey. The results have been used to influence the Children and Young People's Plan, the Needs Assessment by Every Child Matters Outcomes, the Select Committee Investigation into recreational activities for children and young people and continues to have an impact on planning and policy.
- Ipsos - Mori followed the Survey up with targeted work with friendship groups including a group of young people with special educational needs to seek their views on issues raised by the Children and Young people of Kent Survey.
- Several staff who are experienced at working with seldom heard groups have been trained to facilitate focus group discussions.
- A key part of the Integrated Youth Support Strategy is to promote activities that give young people the opportunity to contribute to community life. Kent Youth County Council is active with 30,900 young people voting in the 08/09 elections. Kent Youth County Council members work closely with officers and elected members of KCC, informing them of young people's issues and concerns. The Council meets ten times per year. Kent Youth County Council members select projects to work on through the year. Existing projects include positive activities for young people, positive images of young people, anti-bullying, cultural awareness, Olympic 2012 opportunities and the Environment. Work is underway to coordinate the work of the Kent Youth County Council with local projects and district level.

- The Disabled Children's Service engaged with parents at varying degrees to develop service provision, from awareness raising, information giving and consultation to full participation and parent-led commissioning of services for their disabled children. Feedback is being used to shape changes to existing services and to plan and commission new services around the Aiming High funding. A Parent Participation Strategy has been written as part of the Aiming High communications strategy, which relates to the participation of parents. This strategy aims to develop a structure for parent participation which is sustainable beyond the lifetime of the Aiming High core offer. The Department for Children, Families and Schools has recently awarded a grant under their parent participation programme to a consortium of voluntary organisations led by the Dartford and Gravesham Parents Consortium to develop the strategic involvement of parents in consultation.
- Seldom heard groups have been approached through a number of small-scale local initiatives that include focus group and one to one interviews.
- Parents and Carers: Each Local Children's Service Partnership has a forum for parents to contribute their views. For example in Ashford, parents advocated strongly for road safety project to be established and for road safety to be included in local plans. Over 4,000 parents were surveyed and took part in discussion groups to help inform the Parent's Charter and Kent's new Parenting Strategy.
- Children, young people and parents have started to become involved in decision-making at the highest level with the formation of the KCT board reference panels. Up to 10 children and young people or parents meet in small discussion groups to discuss items on the KCT board agenda and give their input on items of interest to them. This feedback is presented to the KCT board alongside the relevant agenda item.
- Connexions trained groups of young people on participating in recruitment and selection processes. All Connexions Personal Adviser recruitment interview panels include a young person and young people have been involved in the recruitment of the new managing director of KCC's Children, Families and Education Directorate.